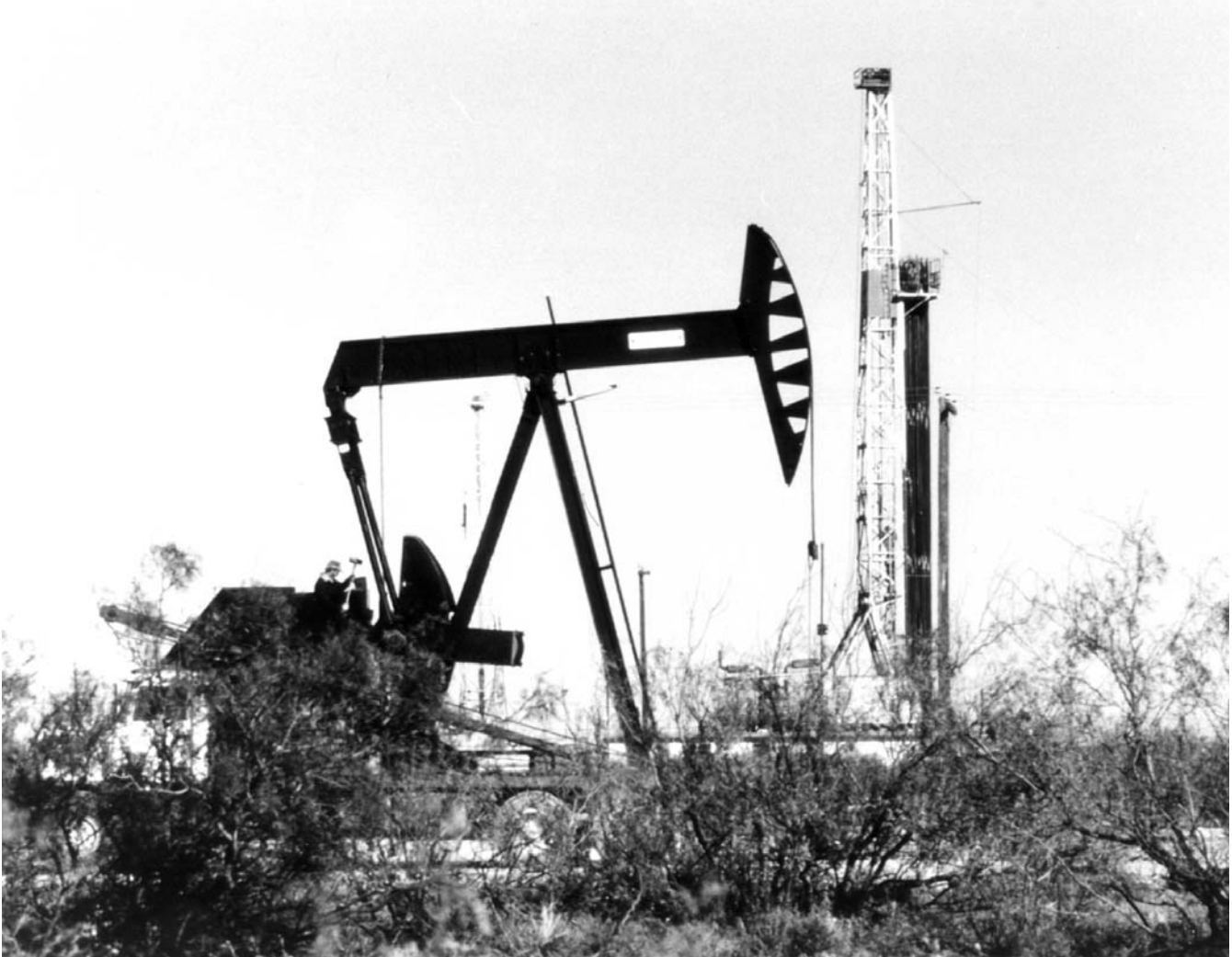


Petroleum



Oil pumping unit and drilling rig, Texas. Source: U.S. Department of Energy.

Table 3.1a Petroleum Overview: Supply

	Supply							
	Field Production ^a			Refinery and Blender Net Production	Imports			Adjust- ments ^d
	Crude Oil	Natural Gas Plant Liquids ^b	Total		Crude Oil ^c	Petroleum Products	Total	
1973 Average	9,208	1,738	10,946	13,854	3,244	3,012	6,256	18
1975 Average	8,375	1,633	10,007	13,685	4,105	1,951	6,056	41
1980 Average	8,597	1,573	10,170	14,622	5,263	1,646	6,909	64
1985 Average	8,971	1,609	10,581	13,750	3,201	1,866	5,067	200
1990 Average	7,355	1,559	8,914	15,272	5,894	2,123	8,018	338
1995 Average	6,560	1,762	8,322	15,994	7,230	1,605	8,835	496
1996 Average	6,465	1,830	8,295	16,324	7,508	1,971	9,478	528
1997 Average	6,452	1,817	8,269	16,759	8,225	1,936	10,162	487
1998 Average	6,252	1,759	8,011	17,030	8,706	2,002	10,708	495
1999 Average	5,881	1,850	7,731	16,989	8,731	2,122	10,852	567
2000 Average	5,822	1,911	7,733	17,243	9,071	2,389	11,459	532
2001 Average	5,801	1,868	7,670	17,285	9,328	2,543	11,871	501
2002 Average	5,746	1,880	7,626	17,273	9,140	2,390	11,530	527
2003 Average	5,681	1,719	7,400	17,487	9,665	2,599	12,264	478
2004 Average	5,419	1,809	7,228	17,814	10,088	3,057	13,145	564
2005 January	5,441	1,812	7,253	17,379	9,997	2,994	12,991	430
February	5,494	1,868	7,362	17,557	10,219	3,530	13,749	517
March	5,601	1,872	7,473	17,585	10,242	2,988	13,230	616
April	5,556	1,840	7,396	18,527	10,224	3,252	13,476	906
May	5,581	1,849	7,429	18,615	10,432	3,573	14,006	414
June	5,460	1,785	7,245	19,063	10,765	3,505	14,270	468
July	5,240	1,748	6,988	18,544	10,377	3,548	13,925	476
August	5,218	1,724	6,942	18,327	10,404	3,444	13,848	308
September	4,204	1,491	5,695	16,608	9,155	4,074	13,229	714
October	4,534	1,544	6,078	16,073	9,444	4,765	14,208	352
November	4,837	1,621	6,458	17,545	10,262	3,834	14,096	435
December	4,984	1,459	6,443	17,771	9,996	3,552	13,548	536
Average	5,178	1,717	6,895	17,800	10,126	3,588	13,714	513
2006 January	E 5,047	1,684	E 6,731	17,279	9,713	3,863	13,576	544
February	E 5,048	1,677	E 6,725	17,152	9,897	3,424	13,320	807
March	E 5,016	1,688	E 6,703	16,915	9,828	3,059	12,887	293
April	E 5,067	1,729	E 6,796	17,372	9,832	3,528	13,360	788
May	E 5,100	1,753	E 6,854	18,277	10,247	3,975	14,223	469
June	E 5,219	1,753	E 6,972	18,828	10,681	3,462	14,143	309
July	E 5,171	1,755	E 6,926	18,493	10,153	3,684	13,837	722
August	E 5,155	1,726	E 6,881	18,777	10,537	4,075	14,612	670
September	E 5,188	1,781	E 6,969	18,481	10,703	3,672	14,375	428
October	E 5,195	1,773	E 6,967	17,706	10,132	3,193	13,324	354
November	E 5,149	1,769	E 6,918	17,623	9,837	3,119	12,955	406
December	RE 5,275	R 1,734	RE 7,009	R 17,961	R 9,584	R 3,127	R 12,711	R 333
Average	RE 5,136	R 1,735	RE 6,872	R 17,909	R 10,095	R 3,517	R 13,612	R 508
2007 January	E 5,279	E 1,771	E 7,050	E 17,713	E 10,036	E 3,407	E 13,443	E 542
February	E 5,298	E 1,763	E 7,061	E 17,094	E 9,454	E 3,208	E 12,662	E 618
2-Month Average	E 5,288	E 1,767	E 7,055	E 17,419	E 9,760	E 3,313	E 13,072	E 578
2006 2-Month Average	E 5,048	1,681	E 6,728	17,219	9,800	3,654	13,455	668
2005 2-Month Average	5,466	1,839	7,305	17,463	10,102	3,249	13,351	471

^a Crude oil production on leases, and natural gas liquids (liquefied petroleum gases, pentanes plus, and a small amount of finished petroleum products) production at natural gas processing plants. Excludes what was previously classified as "Field Production" of finished motor gasoline, motor gasoline blending components, and other hydrocarbons and oxygenates; these are now included in "Adjustments."

^b See Note 6, "Data Discrepancies," at end of section.

^c Includes Strategic Petroleum Reserve imports. See Table 3.2a.

^d An adjustment for crude oil (see Tables 3.2a, 3.5, and 3.6), and for motor gasoline blending components and fuel ethanol (see Tables 3.4 and 3.10). Through 1988, also includes a small amount of distillate fuel oil production at natural gas processing plants (see Table 3.5).

R=Revised. E=Estimate.

Notes: • Crude oil includes lease condensate. • Totals may not equal sum of components due to independent rounding. • Geographic coverage is the 50 States and the District of Columbia.

Web Page: For annual data not displayed between 1973 and 1995, see <http://www.eia.doe.gov/emeu/mer/petro.html>.

Sources: • **1973-1975:** Bureau of Mines, Mineral Industry Surveys, *Petroleum Statement, Annual*, annual reports. • **1976-1980:** Energy Information Administration (EIA), Energy Data Reports, *Petroleum Statement, Annual*, annual reports. • **1981-2005:** *Petroleum Supply Annual*, annual reports. • **2006 and 2007:** EIA, *Petroleum Supply Monthly*, monthly reports; and, for the current two months, *Weekly Petroleum Status Report* data system and *Monthly Energy Review* data system calculations.

Table 3.1b Petroleum Overview: Disposition and Stocks

	Disposition								Stocks ^a		
	Stock Change ^b			Refinery and Blender Net Inputs	Exports			Petroleum Products Supplied	Crude Oil ^{c,d}	Petroleum Products ^{d,e}	Total ^d
	Crude Oil ^{c,d}	Petroleum Products ^{d,e}	Total ^d		Crude Oil	Petroleum Products ^f	Total ^f				
	Thousand Barrels per Day								Million Barrels		
1973 Average	-11	146	135	13,401	2	229	231	17,308	242	766	1,008
1975 Average	17	^d 15	^c 32	13,225	6	204	209	16,322	271	862	1,133
1980 Average	98	42	140	14,025	287	258	544	17,056	466	^d 926	^d 1,392
1985 Average	50	-153	-103	13,192	204	577	781	15,726	814	705	1,519
1990 Average	-35	142	107	14,589	109	748	857	16,988	908	712	1,621
1995 Average	-93	-153	-246	15,220	95	855	949	17,725	895	668	1,563
1996 Average	-124	-28	-151	15,487	110	871	981	18,309	850	658	1,507
1997 Average	51	93	143	15,909	108	896	1,003	18,620	868	692	1,560
1998 Average	74	165	239	16,144	110	835	945	18,917	895	752	1,647
1999 Average	-118	-304	-422	16,103	118	822	940	19,519	852	641	1,493
2000 Average	-70	(s)	-69	16,295	50	990	1,040	19,701	826	641	1,468
2001 Average	99	227	325	16,382	20	951	971	19,649	862	724	1,586
2002 Average	40	-145	-105	16,316	9	975	984	19,761	877	671	1,548
2003 Average	84	-28	56	16,513	12	1,014	1,027	20,034	907	661	1,568
2004 Average	148	61	209	16,762	27	1,021	1,048	20,731	961	683	1,645
2005 January	142	-77	65	16,377	40	877	917	20,694	966	681	1,647
February	658	-97	561	16,538	19	1,237	1,256	20,830	984	678	1,663
March	770	-826	-57	16,643	36	1,272	1,308	21,009	1,008	653	1,661
April	717	648	1,365	17,475	45	1,285	1,330	20,137	1,030	672	1,702
May	19	884	904	17,574	55	1,325	1,380	20,606	1,030	700	1,730
June	-193	519	327	18,045	21	1,456	1,477	21,198	1,024	715	1,740
July	-229	347	118	17,618	34	1,225	1,259	20,939	1,017	726	1,743
August	-222	-656	-877	17,340	17	1,278	1,295	21,666	1,010	706	1,716
September	-345	-45	-390	15,651	24	819	844	20,142	1,000	704	1,704
October	238	152	390	15,215	17	837	854	20,253	1,007	709	1,716
November	23	412	436	16,515	48	912	961	20,623	1,008	721	1,729
December	6	-1,033	-1,028	16,725	24	1,081	1,106	21,495	1,008	689	1,698
Average	129	16	145	16,811	32	1,133	1,165	20,802	1,008	689	1,698
2006 January	-15	696	681	16,271	27	1,040	1,068	20,110	1,007	710	1,717
February	681	-415	266	16,121	15	1,285	1,300	20,316	1,026	698	1,724
March	66	-1,123	-1,057	15,984	29	1,146	1,176	20,695	1,028	663	1,692
April	237	72	309	16,416	26	1,382	1,409	20,182	1,036	665	1,701
May	-203	946	744	17,256	27	1,334	1,361	20,463	1,029	695	1,724
June	-172	360	188	17,847	33	1,310	1,342	20,875	1,024	706	1,730
July	-168	671	503	17,497	13	1,383	1,397	20,582	1,019	726	1,745
August	5	614	619	17,720	15	1,263	1,278	21,322	1,019	745	1,764
September	46	684	730	17,466	21	1,564	1,585	20,472	1,020	766	1,786
October	150	-788	-638	16,712	37	1,484	1,521	20,757	1,025	741	1,767
November	-142	-550	-692	16,663	24	1,364	1,387	20,544	1,021	725	1,746
December	^R -723	^R -80	^R -803	^R 16,933	^R 27	^R 1,159	^R 1,186	^R 20,697	^R 998	^R 722	^R 1,721
Average	^R -26	^R 94	^R 69	^R 16,912	^R 25	^R 1,309	^R 1,333	^R 20,588	^R 998	^R 722	^R 1,721
2007 January	^E 226	^E -29	^E 197	^F 16,722	^E 22	^E 1,222	^E 1,244	^E 20,585	^E 1,013	^E 709	^E 1,722
February	^E 11	^E -1,664	^E -1,654	^F 16,130	^E 22	^E 1,218	^E 1,240	^E 21,719	^E 1,013	^E 662	^E 1,675
2-Month Average	^E 124	^E -805	^E -681	^F 16,441	^E 22	^E 1,220	^E 1,242	^E 21,123	^E 1,013	^E 662	^E 1,675
2006 2-Month Average	315	169	484	16,200	21	1,157	1,178	20,208	1,026	698	1,724
2005 2-Month Average	387	-86	300	16,453	30	1,048	1,078	20,759	984	678	1,663

^a Stocks are at end of period.

^b A negative value indicates a decrease in stocks and a positive value indicates an increase. Current month stock change estimates are based on the change from the previous month's stocks estimates, rather than the actual stocks values shown in this table.

^c Includes Strategic Petroleum Reserve stocks. See Table 3.2b.

^d See Note 4, "New Stock Basis," at end of section.

^e Does not include distillate stocks in the Northeast Heating Oil Reserve.

^f See Note 6, "Data Discrepancies," at end of section.

R=Revised. E=Estimate. F=Forecast. (s)=Less than +500 barrels per day and greater than -500 barrels per day.

Notes: • Crude oil includes lease condensate. • Totals may not equal sum of

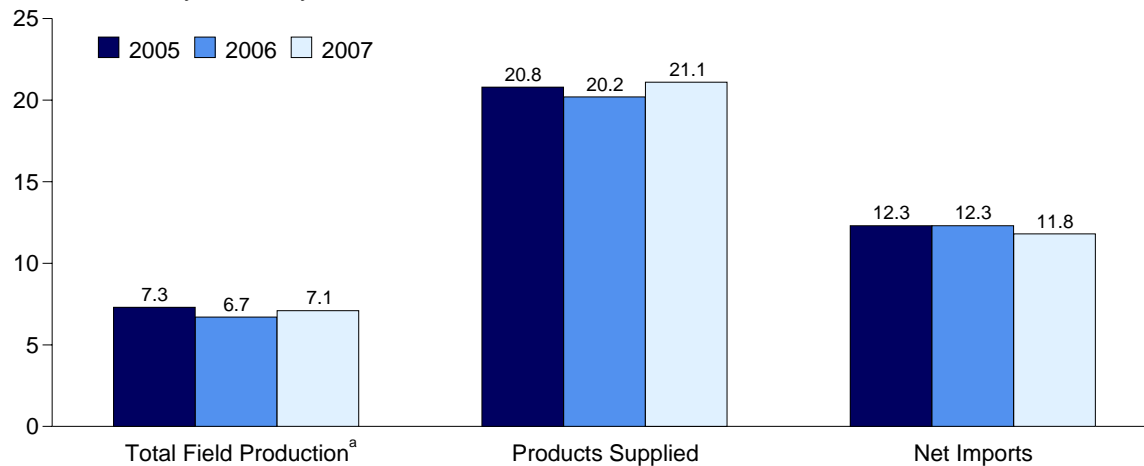
components due to independent rounding. • Geographic coverage is the 50 States and the District of Columbia.

Web Page: For annual data not displayed between 1973 and 1995, see <http://www.eia.doe.gov/emeu/mer/petro.html>.

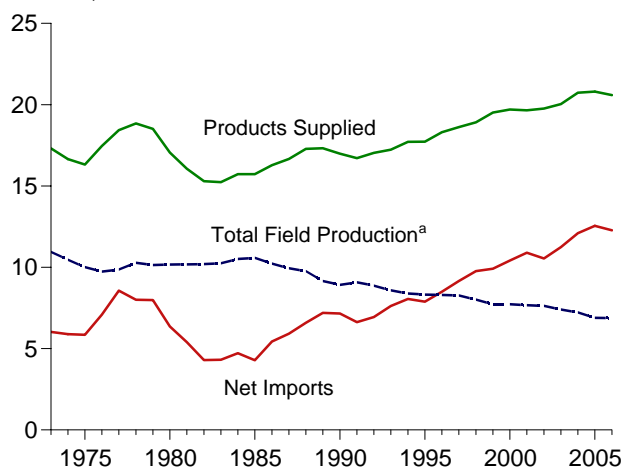
Sources: • **1973-1975:** Bureau of Mines, Mineral Industry Surveys, *Petroleum Statement, Annual*, annual reports. • **1976-1980:** Energy Information Administration (EIA), *Energy Data Reports, Petroleum Statement, Annual*, annual reports. • **1981-2005:** *Petroleum Supply Annual*, annual reports. • **2006 and 2007:** EIA, *Petroleum Supply Monthly*, monthly reports; and, for the current two months, *Weekly Petroleum Status Report* data system, Short-Term Integrated Forecasting System, and *Monthly Energy Review* data system calculations.

Figure 3.1a Petroleum Overview and Production
(Million Barrels per Day)

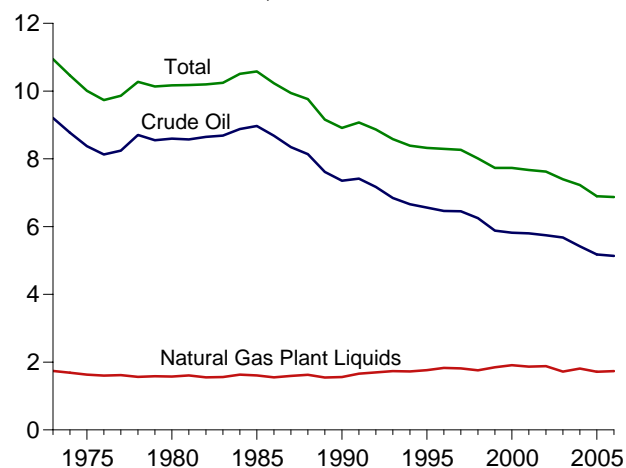
Overview, January-February



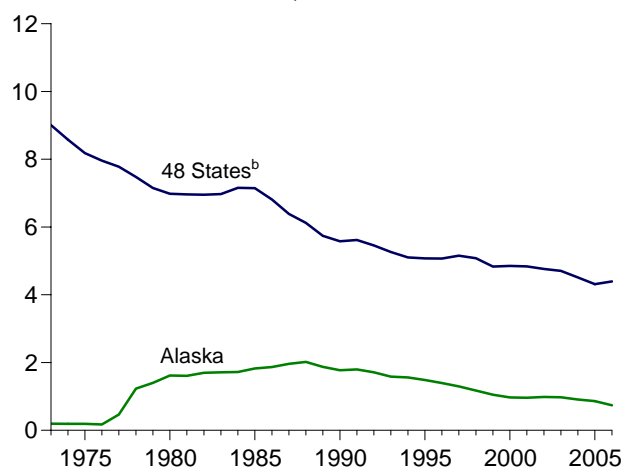
Overview, 1973-2006



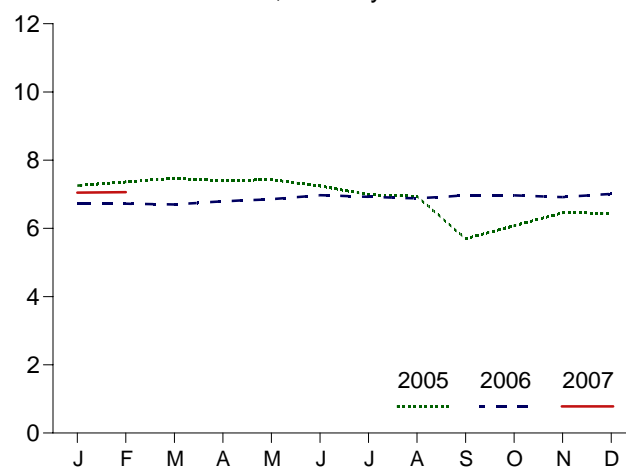
Total Field Production, 1973-2006



Crude Oil Field Production, 1973-2006



Total Field Production^a, Monthly



^aCrude oil and natural gas plant liquids field production.

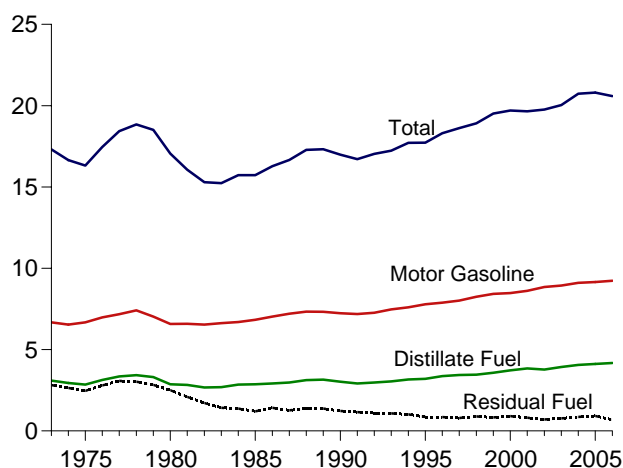
^bUnited States excluding Alaska and Hawaii.

Note: Because vertical scales differ, graphs should not be compared.

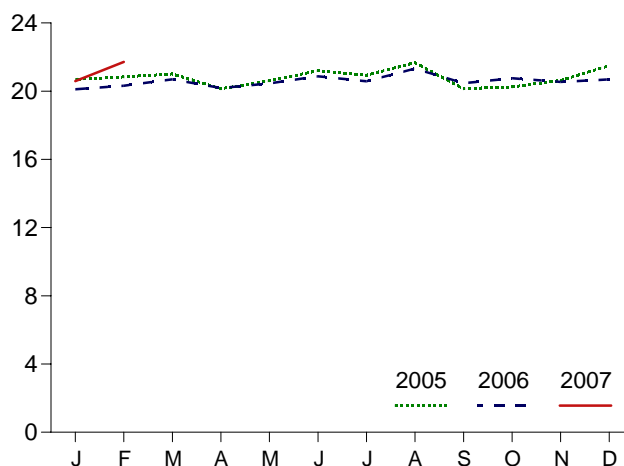
Web Page: <http://www.eia.doe.gov/emeu/mer/petro.html>.
Sources: Tables 3.1a, 3.1b, and 3.2a.

Figure 3.1b Petroleum Products Supplied, Imports, and Stocks
(Million Barrels per Day, Except as Noted)

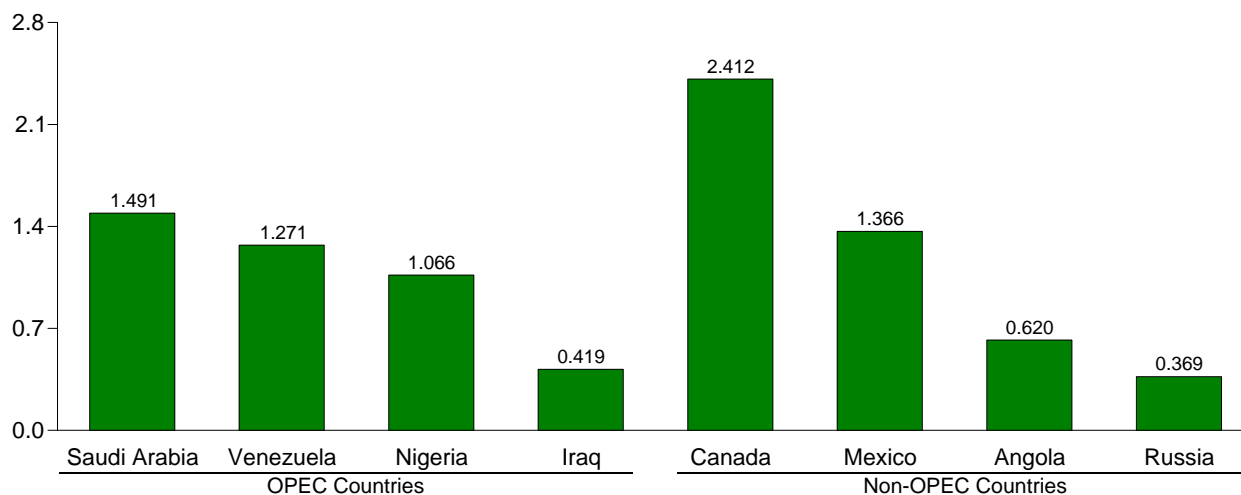
Products Supplied, 1973-2006



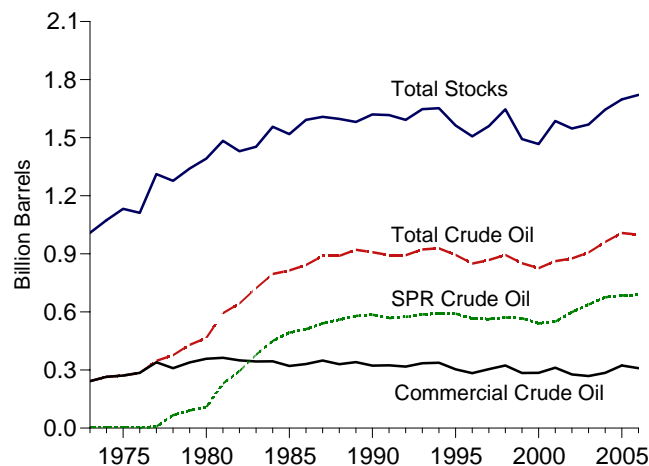
Products Supplied, Monthly



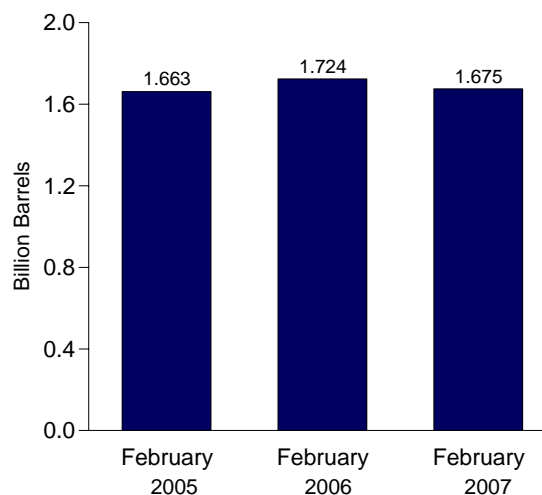
Imports from Selected Countries, December 2006



Stocks, End of Year, 1973-2006



Total Stocks, End of Month



Notes: • OPEC=Organization of the Petroleum Exporting Countries. • SPR=Strategic Petroleum Reserve. • Because vertical scales differ, graphs should not be compared.

Web Page: <http://www.eia.doe.gov/emeu/mer/petro.html>.
Sources: Tables 3.1b, 3.2b, 3.3a, 3.3b, 3.3d, 3.3e, 3.3f, 3.3g, 3.4, 3.5, and 3.6.

Table 3.2a Crude Oil Overview: Supply

	Supply						
	Field Production			Imports			Adjust- ments ^e
	48 States ^a	Alaska	Total	SPR ^{b,c}	Non-SPR ^d	Total	
	Thousand Barrels per Day						
1973 Average	9,010	198	9,208	—	3,244	3,244	-30
1975 Average	8,183	191	8,375	—	4,105	4,105	-14
1980 Average	6,980	1,617	8,597	44	5,219	5,263	6
1985 Average	7,146	1,825	8,971	118	3,083	3,201	145
1990 Average	5,582	1,773	7,355	27	5,867	5,894	257
1995 Average	5,076	1,484	6,560	0	7,230	7,230	193
1996 Average	5,071	1,393	6,465	0	7,508	7,508	215
1997 Average	5,156	1,296	6,452	0	8,225	8,225	145
1998 Average	5,077	1,175	6,252	0	8,706	8,706	115
1999 Average	4,832	1,050	5,881	8	8,722	8,731	191
2000 Average	4,851	970	5,822	8	9,062	9,071	155
2001 Average	4,839	963	5,801	11	9,318	9,328	117
2002 Average	4,761	984	5,746	16	9,124	9,140	110
2003 Average	4,706	974	5,681	0	9,665	9,665	54
2004 Average	4,510	908	5,419	77	10,010	10,088	143
2005 January	4,523	918	5,441	134	9,863	9,997	-2
February	4,577	917	5,494	46	10,173	10,219	107
March	4,681	921	5,601	140	10,102	10,242	177
April	4,662	893	5,556	97	10,128	10,224	475
May	4,688	893	5,581	0	10,432	10,432	-34
June	4,629	831	5,460	64	10,702	10,765	5
July	4,462	779	5,240	52	10,326	10,377	37
August	4,382	836	5,218	34	10,370	10,404	-162
September	3,389	815	4,204	14	9,141	9,155	306
October	3,672	862	4,534	0	9,444	9,444	-76
November	3,964	873	4,837	34	10,228	10,262	5
December	4,148	836	4,984	8	9,989	9,996	95
Average	4,314	864	5,178	52	10,074	10,126	76
2006 January	^E 4,215	^E 832	^E 5,047	0	9,713	9,713	57
February	^E 4,228	^E 821	^E 5,048	14	9,883	9,897	330
March	^E 4,263	^E 752	^E 5,016	0	9,828	9,828	-168
April	^E 4,267	^E 800	^E 5,067	33	9,799	9,832	301
May	^E 4,299	^E 801	^E 5,100	23	10,224	10,247	-4
June	^E 4,438	^E 781	^E 5,219	0	10,681	10,681	-201
July	^E 4,490	^E 681	^E 5,171	0	10,153	10,153	188
August	^E 4,534	^E 621	^E 5,155	0	10,537	10,537	122
September	^E 4,532	^E 655	^E 5,188	0	10,703	10,703	-87
October	^E 4,481	^E 714	^E 5,195	0	10,132	10,132	-139
November	^E 4,494	^E 655	^E 5,149	0	9,837	9,837	-93
December	^{RE} 4,490	^{RE} 785	^{RE} 5,275	^R 0	^R 9,584	^R 9,584	^R -187
Average	^{RE} 4,395	^E 741	^{RE} 5,136	^R 6	^R 10,089	^R 10,095	^R 8
2007 January	^E 4,506	^E 773	^E 5,279	NA	NA	^E 10,036	^E -70
February	^E 4,544	^E 754	^E 5,298	NA	NA	^E 9,454	^E -59
2-Month Average	^E 4,524	^E 764	^E 5,288	NA	NA	^E 9,760	^E -65
2006 2-Month Average	^E 4,221	^E 826	^E 5,048	6	9,794	9,800	187
2005 2-Month Average	4,549	918	5,466	92	10,010	10,102	49

^a United States excluding Alaska and Hawaii.

^b "SPR" is the Strategic Petroleum Reserve. Through 2003, includes crude oil imports by SPR only; beginning in 2004, includes crude oil imports by SPR, and crude oil imports into SPR by others.

^c See Note 6, "Data Discrepancies," at end of section.

^d All crude oil imports other than those in "SPR."

^e An adjustment for crude oil. Through 1982, includes what was previously classified as "Crude Oil Used Directly" (as distillate and residual fuel oil). Through 2004, also includes what were previously classified as "Unaccounted-for Crude Oil" and "Crude Losses."

R=Revised. E=Estimate. NA=Not available. —=Not applicable.

Notes: • Crude oil includes lease condensate. • Totals may not equal

sum of components due to independent rounding. • Geographic coverage is the 50 States and the District of Columbia.

Web Page: For annual data not displayed between 1973 and 1995, see <http://www.eia.doe.gov/emeu/mer/petro.html>.

Sources: • **1973-1975:** Bureau of Mines, Mineral Industry Surveys, *Petroleum Statement, Annual*, annual reports. • **1976-1980:** Energy Information Administration (EIA), *Energy Data Reports, Petroleum Statement, Annual*, annual reports. • **1981-2005:** EIA, *Petroleum Supply Annual*, annual reports. • **2006 and 2007:** EIA, *Petroleum Supply Monthly*, monthly reports; and, for the current two months, *Weekly Petroleum Status Report* data system, and *Monthly Energy Review* data system calculations.

Table 3.2b Crude Oil Overview: Disposition and Stocks

	Disposition						Stocks ^a		
	Stock Change ^b			Refinery Inputs	Exports	Product Supplied	SPR ^c	Non-SPR ^{d,e,f}	Total ^{e,f}
	SPR ^c	Non-SPR ^{d,e,f}	Total ^{e,f}						
	Thousand Barrels per Day						Million Barrels		
1973 Average	—	-11	-11	12,431	2	0	—	242	242
1975 Average	—	17	17	12,442	6	0	—	271	271
1980 Average	45	52	98	13,481	287	0	108	^e 358	^e 466
1985 Average	117	-67	50	12,002	204	60	493	321	814
1990 Average	16	-51	-35	13,409	109	24	586	323	908
1995 Average	(s)	-93	-93	13,973	95	7	592	303	895
1996 Average	-71	-53	-124	14,195	110	6	566	284	850
1997 Average	-7	57	51	14,662	108	2	563	305	868
1998 Average	22	52	74	14,889	110	0	571	324	895
1999 Average	-11	-107	-118	14,804	118	0	567	284	852
2000 Average	-73	3	-70	15,067	50	0	541	286	826
2001 Average	26	73	99	15,128	20	0	550	312	862
2002 Average	134	-94	40	14,947	9	0	599	278	877
2003 Average	108	-24	84	15,304	12	0	638	269	907
2004 Average	102	46	148	15,475	27	0	676	286	961
2005 January	131	10	142	15,254	40	0	680	286	966
February	84	574	658	15,142	19	0	682	302	984
March	198	572	770	15,214	36	0	688	320	1,008
April	124	592	717	15,494	45	0	692	338	1,030
May	66	-47	19	15,905	55	0	694	336	1,030
June	82	-275	-193	16,401	21	0	696	328	1,024
July	78	-307	-229	15,850	34	0	699	318	1,017
August	62	-283	-222	15,664	17	0	701	310	1,010
September	-236	-109	-345	13,986	24	0	694	306	1,000
October	-272	510	238	13,646	17	0	685	322	1,007
November	13	10	23	15,032	48	0	686	322	1,008
December	-35	41	6	15,046	24	0	685	324	1,008
Average	25	104	129	15,220	32	0	685	324	1,008
2006 January	-35	20	-15	14,806	27	0	683	324	1,007
February	47	635	681	14,579	15	0	685	342	1,026
March	41	25	66	14,580	29	0	686	342	1,028
April	61	176	237	14,936	26	0	688	348	1,036
May	23	-226	-203	15,519	27	0	689	341	1,029
June	-25	-147	-172	15,838	33	0	688	336	1,024
July	(s)	-168	-168	15,667	13	0	688	331	1,019
August	(s)	5	5	15,794	15	0	688	331	1,019
September	(s)	46	46	15,737	21	0	688	333	1,020
October	25	126	150	15,000	37	0	689	336	1,025
November	0	-142	-142	15,010	24	0	689	332	1,021
December	0	^R -723	^R -723	^R 15,368	^R 27	0	689	^R 310	^R 998
Average	11	^R -37	^R -26	^R 15,240	^R 25	0	689	^R 310	^R 998
2007 January	^E 0	^E 226	^E 226	^E 14,997	^E 22	0	^E 689	^E 325	^E 1,013
February	^E 0	^E 11	^E 11	^E 14,660	^E 22	0	^E 689	^E 325	^E 1,013
2-Month Average	^E 0	^E 124	^E 124	^E 14,837	^E 22	0	^E 689	^E 325	^E 1,013
2006 2-Month Average	4	311	315	14,698	21	0	685	342	1,026
2005 2-Month Average	109	278	387	15,201	30	0	682	302	984

^a Stocks are at end of period.

^b A negative number indicates a decrease in stocks and a positive number indicates an increase. Current month stock change estimates are based on the change from the previous month's stocks estimates, rather than the actual stocks values shown in this table.

^c "SPR" is the Strategic Petroleum Reserve. Crude oil stocks in the SPR include non-U.S. stocks held under foreign or commercial storage agreements.

^d All crude oil stocks other than those in "SPR."

^e Beginning in 1981, includes stocks of Alaskan crude oil in transit. See Note 5, "Stocks of Alaskan Crude Oil," at end of section.

^f See Note 4, "New Stock Basis," at end of section.

R=Revised. E=Estimate. — =Not applicable. (s)=Less than +500 barrels

per day and greater than -500 barrels per day.

Notes: • Crude oil includes lease condensate. • Totals may not equal sum of components due to independent rounding. • Geographic coverage is the 50 States and the District of Columbia.

Web Page: For annual data not displayed between 1973 and 1995, see <http://www.eia.doe.gov/emeu/mer/petro.html>.

Sources: • **1973-1975:** Bureau of Mines, Mineral Industry Surveys, *Petroleum Statement, Annual*, annual reports. • **1976-1980:** Energy Information Administration (EIA), *Energy Data Reports, Petroleum Statement, Annual*, annual reports. • **1981-2005:** EIA, *Petroleum Supply Annual*, annual reports. • **2006 and 2007:** EIA, *Petroleum Supply Monthly*, monthly reports; and, for the current two months, *Weekly Petroleum Status Report* data system, and *Monthly Energy Review* data system calculations.

Table 3.3a Petroleum Imports From Bahrain, Iran, Iraq, and Kuwait
(Thousand Barrels per Day)

	Persian Gulf ^a							
	Bahrain		Iran ^b		Iraq		Kuwait ^c	
	Total	Crude Oil	Total	Crude Oil	Total	Crude Oil	Total	Crude Oil
1973 Average	11	0	223	216	4	4	47	42
1975 Average	16	0	280	278	2	2	16	4
1980 Average	(s)	0	9	8	28	28	27	27
1985 Average	4	0	27	27	46	46	21	4
1990 Average	1	0	0	0	518	514	86	79
1995 Average	1	0	0	0	0	0	218	213
1996 Average	1	0	0	0	1	1	236	235
1997 Average	0	0	0	0	89	89	253	253
1998 Average	1	0	0	0	336	336	301	300
1999 Average	0	0	0	0	725	725	248	246
2000 Average	1	0	0	0	620	620	272	263
2001 Average	(s)	0	0	0	795	795	250	237
2002 Average	0	0	0	0	459	459	228	216
2003 Average	1	0	0	0	481	481	220	208
2004 Average	4	0	0	0	656	655	250	241
2005 January	0	0	0	0	493	493	203	197
February	0	0	0	0	551	551	183	177
March	0	0	0	0	548	548	207	179
April	0	0	0	0	569	562	187	174
May	0	0	0	0	604	604	291	277
June	0	0	0	0	608	608	184	184
July	0	0	0	0	642	631	278	272
August	0	0	0	0	369	369	229	208
September	0	0	0	0	459	443	237	235
October	0	0	0	0	577	563	330	271
November	0	0	0	0	572	572	289	273
December	0	0	0	0	390	390	291	268
Average	0	0	0	0	531	527	243	227
2006 January	0	0	0	0	532	532	74	73
February	0	0	0	0	450	450	158	152
March	0	0	0	0	476	476	118	111
April	0	0	0	0	531	531	225	225
May	0	0	0	0	666	666	226	220
June	0	0	0	0	617	617	201	201
July	0	0	0	0	592	592	155	155
August	0	0	0	0	620	620	155	136
September	0	0	0	0	655	655	227	227
October	0	0	0	0	505	505	239	234
November	0	0	0	0	573	573	259	253
December	0	0	0	0	419	419	169	163
Average	0	0	0	0	553	553	184	179

^a The country of origin for petroleum products may not be the country of origin for the crude oil from which the products were produced. For example, refined products imported from West European refining areas may have been produced from Middle East crude oil.

^b In January 1988, a small amount of Iranian crude oil entered the United States from the Virgin Islands. The oil originated in Iran and was exported to the Virgin Islands prior to the signing of Executive Order 12613 on November 29, 1987.

^c Imports from the Neutral Zone are reported as originating in either Saudi Arabia or Kuwait depending on the country reported to U.S. Customs.

(s)=Less than 500 barrels per day.

Notes: • Beginning in October 1977, Strategic Petroleum Reserve imports are included. • U.S. geographic coverage is the 50 States and the District of Columbia.

Web Page: For annual data not displayed between 1973 and 1995, see <http://www.eia.doe.gov/emeu/mer/petro.html>.

Sources: • **1973-1975:** Bureau of Mines, Mineral Industry Surveys, *Petroleum Statement, Annual*, annual reports. • **1976-1980:** Energy Information Administration (EIA), Energy Data Reports, *Petroleum Statement, Annual*, annual reports. • **1981-2005:** EIA, *Petroleum Supply Annual*, annual reports. • **2006:** EIA, *Petroleum Supply Monthly*, monthly reports.

Table 3.3b Petroleum Imports From Qatar, Saudi Arabia, U.A.E., and Total Persian Gulf
(Thousand Barrels per Day)

	Persian Gulf ^a							
	Qatar		Saudi Arabia ^b		United Arab Emirates		Total ^a	
	Total	Crude Oil	Total	Crude Oil	Total	Crude Oil	Total	Crude Oil
1973 Average	7	7	486	462	71	71	848	802
1975 Average	18	18	715	701	117	117	1,165	1,121
1980 Average	22	22	1,261	1,250	172	172	1,519	1,508
1985 Average	(s)	0	168	132	45	35	311	244
1990 Average	4	4	1,339	1,195	17	9	1,966	1,801
1995 Average	0	0	1,344	1,260	10	5	1,573	1,479
1996 Average	0	0	1,363	1,248	3	3	1,604	1,488
1997 Average	4	0	1,407	1,293	2	0	1,755	1,635
1998 Average	4	1	1,491	1,404	3	3	2,136	2,044
1999 Average	10	1	1,478	1,387	2	0	2,464	2,360
2000 Average	9	0	1,572	1,523	15	3	2,488	2,409
2001 Average	13	(s)	1,662	1,611	40	21	2,761	2,664
2002 Average	15	9	1,552	1,519	15	10	2,269	2,213
2003 Average	3	0	1,774	1,726	21	10	2,501	2,425
2004 Average	5	4	1,558	1,495	20	5	2,493	2,400
2005 January	0	0	1,653	1,602	11	0	2,361	2,291
February	1	0	1,574	1,525	10	0	2,319	2,253
March	1	0	1,651	1,576	6	0	2,412	2,302
April	0	0	1,514	1,459	9	0	2,280	2,194
May	0	0	1,580	1,472	22	22	2,498	2,375
June	0	0	1,596	1,566	15	0	2,403	2,358
July	0	0	1,692	1,499	10	0	2,622	2,402
August	0	0	1,589	1,444	7	0	2,194	2,021
September	8	0	1,390	1,286	36	26	2,130	1,989
October	18	0	1,351	1,204	42	34	2,319	2,072
November	19	0	1,370	1,267	45	21	2,294	2,132
December	6	0	1,472	1,438	8	0	2,166	2,097
Average	4	0	1,537	1,445	18	9	2,334	2,207
2006 January	7	0	1,369	1,335	7	0	1,989	1,941
February	0	0	1,451	1,418	10	0	2,069	2,020
March	0	0	1,364	1,322	0	0	1,958	1,909
April	0	0	1,595	1,582	10	0	2,361	2,338
May	0	0	1,492	1,457	0	0	2,384	2,343
June	0	0	1,522	1,427	8	8	2,348	2,253
July	14	14	1,313	1,264	4	0	2,078	2,025
August	0	0	1,514	1,477	25	14	2,314	2,246
September	0	0	1,564	1,546	35	33	2,481	2,461
October	0	0	1,382	1,322	5	0	2,132	2,061
November	0	0	1,491	1,444	0	0	2,322	2,269
December	0	0	1,491	1,471	0	0	2,079	2,052
Average	2	1	1,461	1,421	9	5	2,209	2,159

^a The country of origin for petroleum products may not be the country of origin for the crude oil from which the products were produced. For example, refined products imported from West European refining areas may have been produced from Middle East crude oil.

^b Imports from the Neutral Zone are reported as originating in either Saudi Arabia or Kuwait depending on the country reported to U.S. Customs.

(s)=Less than 500 barrels per day.

Notes: • Beginning in October 1977, Strategic Petroleum Reserve imports are included. • Totals may not equal sum of components due to independent

rounding. • U.S. geographic coverage is the 50 States and the District of Columbia.

Web Page: For annual data not displayed between 1973 and 1995, see <http://www.eia.doe.gov/emeu/mer/petro.html>.

Sources: • **1973-1975:** Bureau of Mines, Mineral Industry Surveys, *Petroleum Statement, Annual*, annual reports. • **1976-1980:** Energy Information Administration (EIA), *Energy Data Reports, Petroleum Statement, Annual*, annual reports. • **1981-2005:** EIA, *Petroleum Supply Annual*, annual reports. • **2006:** EIA, *Petroleum Supply Monthly*, monthly reports.

Table 3.3c Petroleum Imports From Algeria, Ecuador, Gabon, Indonesia, and Libya
(Thousand Barrels per Day)

	Other OPEC ^{a,b}									
	Algeria		Ecuador ^c		Gabon ^d		Indonesia		Libya	
	Total	Crude Oil	Total	Crude Oil	Total	Crude Oil	Total	Crude Oil	Total	Crude Oil
1973 Average	136	120	48	47	0	0	213	200	164	133
1975 Average	282	264	57	57	27	27	390	379	232	223
1980 Average	488	456	27	17	26	25	348	314	554	548
1985 Average	187	84	67	56	52	51	314	292	4	0
1990 Average	280	63	49	38	64	64	114	98	0	0
1995 Average	234	27	(c)	(c)	(d)	(d)	88	64	0	0
1996 Average	256	8	(c)	(c)	(d)	(d)	59	44	0	0
1997 Average	285	6	(c)	(c)	(d)	(d)	58	51	0	0
1998 Average	290	10	(c)	(c)	(d)	(d)	66	50	0	0
1999 Average	259	25	(c)	(c)	(d)	(d)	81	70	0	0
2000 Average	225	1	(c)	(c)	(d)	(d)	48	36	0	0
2001 Average	278	11	(c)	(c)	(d)	(d)	51	40	0	0
2002 Average	264	30	(c)	(c)	(d)	(d)	53	50	0	0
2003 Average	382	112	(c)	(c)	(d)	(d)	37	26	0	0
2004 Average	452	215	(c)	(c)	(d)	(d)	45	34	20	18
2005 January	368	146	(c)	(c)	(d)	(d)	22	22	0	0
February	504	219	(c)	(c)	(d)	(d)	11	11	96	96
March	380	134	(c)	(c)	(d)	(d)	38	19	9	0
April	467	232	(c)	(c)	(d)	(d)	25	25	21	20
May	449	152	(c)	(c)	(d)	(d)	10	10	35	35
June	581	292	(c)	(c)	(d)	(d)	7	7	106	87
July	540	325	(c)	(c)	(d)	(d)	11	11	40	16
August	610	330	(c)	(c)	(d)	(d)	20	20	136	116
September	447	218	(c)	(c)	(d)	(d)	33	10	37	20
October	496	216	(c)	(c)	(d)	(d)	58	39	83	55
November	500	265	(c)	(c)	(d)	(d)	22	22	61	51
December	405	212	(c)	(c)	(d)	(d)	28	28	53	34
Average	478	228	(c)	(c)	(d)	(d)	24	19	56	44
2006 January	713	235	(c)	(c)	(d)	(d)	26	8	69	39
February	446	163	(c)	(c)	(d)	(d)	12	12	69	58
March	404	281	(c)	(c)	(d)	(d)	10	10	40	40
April	543	256	(c)	(c)	(d)	(d)	17	17	65	51
May	643	350	(c)	(c)	(d)	(d)	30	15	66	26
June	740	491	(c)	(c)	(d)	(d)	17	11	144	110
July	743	413	(c)	(c)	(d)	(d)	29	18	116	104
August	803	506	(c)	(c)	(d)	(d)	27	25	111	84
September	796	453	(c)	(c)	(d)	(d)	29	8	71	59
October	813	449	(c)	(c)	(d)	(d)	32	9	105	91
November	462	253	(c)	(c)	(d)	(d)	20	10	103	72
December	677	421	(c)	(c)	(d)	(d)	71	50	67	46
Average	650	357	(c)	(c)	(d)	(d)	27	16	85	65

^a Organization of the Petroleum Exporting Countries.

^b The country of origin for petroleum products may not be the country of origin for the crude oil from which the products were produced. For example, refined products imported from West European refining areas may have been produced from Middle East crude oil.

^c Ecuador withdrew from OPEC on December 31, 1992. As of January 1993, imports from Ecuador appear on Table 3.3f under "Non-OPEC."

^d Gabon withdrew from OPEC on December 31, 1994. As of January 1995, imports from Gabon appear on Table 3.3f under "Non-OPEC."

Notes: • Beginning in October 1977, Strategic Petroleum Reserve imports

are included. • U.S. geographic coverage is the 50 States and the District of Columbia.

Web Page: For annual data not displayed between 1973 and 1995, see <http://www.eia.doe.gov/emeu/mer/petro.html>.

Sources: • **1973-1975:** Bureau of Mines, Mineral Industry Surveys, *Petroleum Statement, Annual*, annual reports. • **1976-1980:** Energy Information Administration (EIA), *Energy Data Reports, Petroleum Statement, Annual*, annual reports. • **1981-2005:** EIA, *Petroleum Supply Annual*, annual reports. • **2006:** EIA, *Petroleum Supply Monthly*, monthly reports.

Table 3.3d Petroleum Imports From Nigeria, Venezuela, Total Other OPEC, and Total OPEC

(Thousand Barrels per Day)

	Other OPEC ^{a,b}						Total OPEC ^c	
	Nigeria		Venezuela		Total		Total	Crude Oil
	Total	Crude Oil	Total	Crude Oil	Total	Crude Oil		
1973 Average	459	448	1,135	344	2,156	1,293	2,993	2,095
1975 Average	762	746	702	395	2,452	2,091	3,601	3,211
1980 Average	857	841	481	156	2,781	2,356	4,300	3,864
1985 Average	293	280	605	306	1,522	1,069	1,830	1,312
1990 Average	800	784	1,025	666	2,332	1,713	4,296	3,514
1995 Average	627	621	1,480	1,151	2,430	1,862	4,002	3,341
1996 Average	617	595	1,676	1,303	2,609	1,950	4,211	3,438
1997 Average	698	689	1,773	1,394	2,814	2,140	4,569	3,775
1998 Average	696	689	1,719	1,377	2,771	2,125	4,905	4,169
1999 Average	657	623	1,493	1,150	2,489	1,869	4,953	4,228
2000 Average	896	875	1,546	1,223	2,716	2,135	5,203	4,544
2001 Average	885	842	1,553	1,291	2,768	2,184	5,528	4,848
2002 Average	621	589	1,398	1,201	2,336	1,870	4,605	4,083
2003 Average	867	832	1,376	1,183	2,662	2,153	5,162	4,578
2004 Average	1,140	1,078	1,554	1,297	3,211	2,642	5,701	5,042
2005 January	1,103	1,042	1,622	1,376	3,115	2,587	5,476	4,878
February	1,221	1,130	1,710	1,357	3,541	2,812	5,860	5,065
March	974	900	1,546	1,322	2,948	2,375	5,359	4,676
April	1,243	1,130	1,581	1,391	3,338	2,799	5,618	4,993
May	1,234	1,126	1,648	1,323	3,375	2,645	5,873	5,021
June	1,089	1,012	1,600	1,292	3,382	2,689	5,785	5,047
July	1,255	1,134	1,632	1,327	3,478	2,813	6,100	5,215
August	1,112	1,053	1,601	1,332	3,479	2,851	5,673	4,873
September	1,065	959	1,374	1,073	2,955	2,280	5,085	4,270
October	1,203	1,103	1,255	911	3,093	2,324	5,412	4,396
November	1,248	1,163	1,258	1,009	3,089	2,509	5,383	4,641
December	1,246	1,174	1,532	1,183	3,265	2,631	5,431	4,727
Average	1,166	1,077	1,529	1,241	3,253	2,608	5,587	4,816
2006 January	1,186	1,133	1,539	1,228	3,533	2,642	5,522	4,583
February	1,377	1,342	1,475	1,178	3,378	2,752	5,448	4,772
March	1,195	1,114	1,530	1,183	3,180	2,628	5,138	4,537
April	1,098	1,022	1,393	1,171	3,116	2,517	5,477	4,855
May	1,189	1,075	1,470	1,169	3,399	2,635	5,782	4,978
June	1,094	996	1,306	1,008	3,301	2,615	5,649	4,868
July	1,073	1,014	1,467	1,191	3,427	2,742	5,505	4,766
August	1,026	898	1,438	1,151	3,404	2,664	5,718	4,910
September	1,078	966	1,384	1,129	3,357	2,615	5,838	5,076
October	1,088	1,049	1,354	1,125	3,393	2,723	5,525	4,784
November	972	919	1,275	1,088	2,831	2,343	5,153	4,612
December	1,066	1,010	1,271	1,045	3,153	2,572	5,232	4,623
Average	1,119	1,043	1,409	1,139	3,290	2,621	5,499	4,780

^a Organization of the Petroleum Exporting Countries.

^b The country of origin for petroleum products may not be the country of origin for the crude oil from which the products were produced. For example, refined products imported from West European refining areas may have been produced from Middle East crude oil.

^c OPEC includes the Persian Gulf nations that are displayed on Tables 3.3a and 3.3b except Bahrain, which is not a member of OPEC, and the nations displayed under "Other OPEC" on Tables 3.3c and 3.3d. Ecuador withdrew from OPEC on December 31, 1992; as of January 1993, imports from Ecuador appear on Table 3.3f under "Non-OPEC." Gabon withdrew on December 31, 1994; as of January 1995, imports from Gabon appear on Table 3.3f under "Non-OPEC." Imports from Bahrain are accounted for under

"Other Non-OPEC" on Table 3.3h.

Notes: • Beginning in November 1977, Strategic Petroleum Reserve imports are included. • Totals may not equal sum of components due to independent rounding. • U.S. geographic coverage is the 50 States and the District of Columbia.

Web Page: For annual data not displayed between 1973 and 1995, see <http://www.eia.doe.gov/emeu/mer/petro.html>.

Sources: • **1973-1975:** Bureau of Mines, Mineral Industry Surveys, *Petroleum Statement, Annual*, annual reports. • **1976-1980:** Energy Information Administration (EIA), *Energy Data Reports, Petroleum Statement, Annual*, annual reports. • **1981-2005:** EIA, *Petroleum Supply Annual*, annual reports. • **2006:** EIA, *Petroleum Supply Monthly*, monthly reports.

Table 3.3e Petroleum Imports From Angola, Australia, Bahamas, Brazil, Canada, and China

(Thousand Barrels per Day)

	Non-OPEC ^{a,b}											
	Angola		Australia		Bahamas		Brazil		Canada		China	
	Total	Crude Oil	Total	Crude Oil	Total	Crude Oil	Total	Crude Oil	Total	Crude Oil	Total	Crude Oil
1973 Average	49	49	2	0	174	0	9	0	1,325	1,001	(s)	0
1975 Average	75	71	5	0	152	0	5	0	846	600	0	0
1980 Average	42	37	1	0	78	0	3	1	455	199	(s)	0
1985 Average	110	104	37	21	40	0	61	0	770	468	59	36
1990 Average	237	236	53	47	37	0	49	0	934	643	80	77
1995 Average	367	360	16	16	2	0	8	0	1,332	1,040	53	53
1996 Average	351	344	31	25	1	0	9	0	1,424	1,075	57	57
1997 Average	427	425	48	31	1	0	5	0	1,563	1,198	49	48
1998 Average	468	465	57	31	4	0	26	0	1,598	1,266	42	42
1999 Average	361	357	42	31	3	0	26	0	1,539	1,178	21	13
2000 Average	301	295	56	49	0	0	51	5	1,807	1,348	44	33
2001 Average	328	321	43	34	10	0	82	13	1,828	1,356	24	13
2002 Average	332	321	57	51	34	0	116	58	1,971	1,445	26	20
2003 Average	371	363	34	27	30	0	108	50	2,072	1,549	27	13
2004 Average	316	306	27	21	38	0	104	51	2,138	1,616	22	14
2005 January	474	462	21	21	32	0	123	32	2,235	1,578	24	22
February	394	369	11	11	43	0	153	52	2,114	1,524	29	23
March	692	692	0	0	46	0	55	32	2,037	1,467	29	27
April	374	374	0	0	32	0	49	36	2,073	1,537	31	21
May	353	324	0	0	58	0	134	115	2,216	1,733	31	30
June	397	397	21	21	34	0	226	212	2,171	1,705	41	14
July	219	219	51	22	74	0	156	138	2,080	1,613	17	9
August	609	585	3	0	11	0	226	127	2,085	1,596	24	18
September	473	451	45	21	21	0	162	83	2,215	1,670	29	23
October	566	501	0	0	23	0	192	79	2,109	1,516	56	37
November	675	658	21	21	8	0	151	65	2,305	1,756	50	36
December	443	433	0	0	3	0	242	159	2,531	1,900	34	23
Average	473	456	14	10	32	0	156	94	2,181	1,633	33	24
2006 January	433	420	20	20	10	0	106	61	2,311	1,768	25	23
February	478	464	0	0	22	0	203	164	2,262	1,710	27	21
March	522	510	11	0	7	0	193	123	2,254	1,716	20	16
April	419	389	0	0	10	0	169	111	2,238	1,710	49	40
May	391	379	4	0	11	0	140	96	2,313	1,868	19	7
June	565	525	0	0	9	0	151	107	2,258	1,799	26	16
July	695	666	16	0	0	0	279	187	2,114	1,624	5	0
August	544	525	0	0	4	0	311	196	2,468	1,850	54	40
September	678	648	0	0	7	0	191	99	2,262	1,747	71	49
October	536	506	20	20	8	0	221	171	2,144	1,704	29	15
November	521	505	19	19	0	0	182	156	2,598	2,064	1	0
December	620	610	0	0	12	0	162	130	2,412	1,829	(s)	0
Average	534	513	8	5	8	0	192	133	2,303	1,782	27	19

^a Organization of the Petroleum Exporting Countries.

^b The country of origin for petroleum products may not be the country of origin for the crude oil from which the products were produced. For example, refined products imported from West European refining areas may have been produced from Middle East crude oil.

(s)=Less than 500 barrels per day.

Notes: • Beginning in October 1977, Strategic Petroleum Reserve imports are included. • U.S. geographic coverage is the 50 States and the District of

Columbia.

Web Page: For annual data not displayed between 1973 and 1995, see <http://www.eia.doe.gov/emeu/mer/petro.html>.

Sources: • **1973-1975:** Bureau of Mines, Mineral Industry Surveys, *Petroleum Statement, Annual*, annual reports. • **1976-1980:** Energy Information Administration (EIA), *Energy Data Reports, Petroleum Statement, Annual*, annual reports. • **1981-2005:** EIA, *Petroleum Supply Annual*, annual reports. • **2006:** EIA, *Petroleum Supply Monthly*, monthly reports.

Table 3.3f Petroleum Imports From Colombia, Ecuador, Gabon, Italy, Malaysia, and Mexico

(Thousand Barrels per Day)

	Non-OPEC ^{a,b}											
	Colombia		Ecuador ^c		Gabon ^d		Italy		Malaysia		Mexico	
	Total	Crude Oil	Total	Crude Oil	Total	Crude Oil	Total	Crude Oil	Total	Crude Oil	Total	Crude Oil
1973 Average	9	2	—	—	—	—	125	0	12	1	16	1
1975 Average	9	0	—	—	—	—	27	0	8	5	71	70
1980 Average	4	0	—	—	—	—	4	0	70	61	533	507
1985 Average	23	0	—	—	—	—	60	(s)	3	1	816	715
1990 Average	182	140	—	—	—	—	58	2	41	40	755	689
1995 Average	219	207	97	96	229	229	5	0	8	6	1,068	1,027
1996 Average	234	226	104	96	184	184	8	0	11	6	1,244	1,207
1997 Average	271	270	115	114	230	230	7	0	23	8	1,385	1,360
1998 Average	354	349	101	98	207	207	12	0	35	26	1,351	1,321
1999 Average	468	452	118	114	168	168	10	0	35	21	1,324	1,254
2000 Average	342	318	128	125	143	143	30	0	45	29	1,373	1,313
2001 Average	296	260	120	113	140	140	40	0	37	15	1,440	1,394
2002 Average	260	235	110	100	143	143	34	0	16	9	1,547	1,500
2003 Average	195	166	145	139	131	131	34	0	31	21	1,623	1,569
2004 Average	176	142	245	232	142	142	43	0	30	18	1,665	1,598
2005 January	150	122	315	309	145	145	27	0	65	40	1,534	1,426
February	110	99	363	356	140	140	14	0	23	0	1,610	1,488
March	126	108	305	305	196	196	18	0	0	0	1,689	1,590
April	241	183	261	240	64	64	21	0	14	0	1,650	1,541
May	176	116	238	238	109	109	49	0	34	13	1,858	1,761
June	251	227	312	288	64	64	65	0	22	22	1,761	1,646
July	205	172	228	219	124	124	51	0	25	11	1,600	1,502
August	266	208	297	292	162	162	47	0	(s)	0	1,745	1,630
September	158	112	198	191	193	192	58	0	27	11	1,329	1,249
October	176	111	275	273	126	126	81	0	23	11	1,589	1,463
November	330	281	264	264	66	66	39	0	25	10	1,777	1,658
December	159	135	340	340	139	139	44	0	0	0	1,797	1,707
Average	196	156	283	276	128	127	43	0	22	10	1,662	1,556
2006 January	195	169	380	373	61	61	84	0	13	13	1,796	1,701
February	168	126	234	222	34	34	48	0	15	12	1,878	1,774
March	170	170	242	242	81	81	61	0	13	0	1,801	1,697
April	176	149	319	312	33	33	81	0	10	0	1,750	1,601
May	204	185	246	239	15	15	58	0	13	0	1,710	1,576
June	223	211	295	288	89	89	55	0	11	0	1,855	1,734
July	156	144	181	170	53	53	50	0	49	32	1,709	1,561
August	131	125	292	285	72	72	67	0	28	10	1,758	1,652
September	185	170	326	319	82	82	60	0	17	0	1,569	1,441
October	133	131	322	315	56	56	34	0	18	18	1,646	1,481
November	46	42	248	243	63	63	39	0	9	0	1,584	1,462
December	74	74	256	254	75	75	51	0	30	0	1,366	1,245
Average	155	141	278	272	60	60	57	0	19	7	1,700	1,576

^a Organization of the Petroleum Exporting Countries.

^b The country of origin for petroleum products may not be the country of origin for the crude oil from which the products were produced. For example, refined products imported from West European refining areas may have been produced from Middle East crude oil.

^c Through 1992, Ecuador was a member of OPEC. See Table 3.3c.

^d Through December 1994, Gabon was a member of OPEC. See Table 3.3c.

— =Not applicable. (s)=Less than 500 barrels per day.

Notes: • Beginning in October 1977, Strategic Petroleum Reserve imports

are included. • U.S. geographic coverage is the 50 States and the District of Columbia.

Web Page: For annual data not displayed between 1973 and 1995, see <http://www.eia.doe.gov/emeu/mer/petro.html>.

Sources: • **1973-1975:** Bureau of Mines, Mineral Industry Surveys, *Petroleum Statement, Annual*, annual reports. • **1976-1980:** Energy Information Administration (EIA), Energy Data Reports, *Petroleum Statement, Annual*, annual reports. • **1981-2005:** EIA, *Petroleum Supply Annual*, annual reports. • **2006:** EIA, *Petroleum Supply Monthly*, monthly reports.

Table 3.3g Petroleum Imports From Netherlands, Netherlands Antilles, Norway, Puerto Rico, Russia, and Spain
(Thousand Barrels per Day)

	Non-OPEC ^{a,b}											
	Netherlands		Netherlands Antilles		Norway		Puerto Rico		Russia ^c		Spain	
	Total	Crude Oil	Total	Crude Oil	Total	Crude Oil	Total	Crude Oil	Total	Crude Oil	Total	Crude Oil
1973 Average	53	0	585	0	1	0	99	0	26	0	26	0
1975 Average	19	4	332	0	17	12	90	0	14	0	1	0
1980 Average	2	(s)	225	0	144	144	88	0	1	0	1	0
1985 Average	58	0	40	0	32	31	28	0	8	(s)	29	1
1990 Average	55	0	31	0	102	96	32	0	45	1	47	0
1995 Average	15	0	52	0	273	258	15	0	25	14	16	1
1996 Average	19	0	64	0	313	293	20	0	25	18	29	1
1997 Average	25	0	74	0	309	288	16	0	13	3	21	0
1998 Average	31	0	82	0	236	221	15	0	24	9	18	0
1999 Average	27	0	65	0	304	263	13	0	89	21	10	0
2000 Average	30	1	90	0	343	302	15	0	72	7	25	0
2001 Average	43	0	81	0	341	281	4	0	90	0	31	0
2002 Average	66	0	81	0	393	348	(s)	0	210	85	17	0
2003 Average	87	0	70	0	270	181	0	0	254	151	24	0
2004 Average	101	0	29	0	244	143	0	0	298	158	24	0
2005 January	62	0	9	0	248	162	1	0	337	176	7	0
February	115	0	25	0	126	50	0	0	464	294	29	0
March	73	0	29	0	288	165	0	0	510	304	9	0
April	131	0	10	0	245	137	0	0	660	464	34	0
May	184	0	23	0	241	117	0	0	365	209	40	0
June	132	0	57	0	357	194	0	0	350	116	37	0
July	200	0	47	0	206	102	0	0	614	341	34	0
August	108	0	37	0	131	59	0	0	237	72	32	0
September	199	0	29	0	236	125	0	0	466	150	26	0
October	226	0	35	0	308	145	2	0	435	175	19	0
November	206	0	21	0	232	103	0	0	217	47	30	0
December	173	0	28	0	177	66	0	0	275	50	35	0
Average	151	0	29	0	233	119	(s)	0	410	199	28	0
2006 January	216	0	44	0	205	67	0	0	218	0	14	0
February	142	0	57	0	199	71	0	0	304	43	35	0
March	105	0	37	0	209	121	0	0	221	34	37	0
April	161	0	8	0	206	74	0	0	218	0	56	0
May	259	0	38	0	199	98	0	0	620	255	52	0
June	211	0	64	0	140	92	0	0	429	216	60	0
July	196	0	23	0	236	160	0	0	425	134	39	0
August	259	0	35	0	255	108	0	0	485	167	76	0
September	153	0	16	0	159	76	0	0	534	183	48	0
October	116	0	18	0	181	120	0	0	381	98	47	0
November	152	0	38	0	174	81	0	0	223	16	58	0
December	118	0	19	0	178	110	0	0	369	139	44	0
Average	175	0	33	0	195	98	0	0	370	108	47	0

^a Organization of the Petroleum Exporting Countries.

^b The country of origin for petroleum products may not be the country of origin for the crude oil from which the products were produced. For example, refined products imported from West European refining areas may have been produced from Middle East crude oil.

^c Imports from other republics in the former U.S.S.R. may be included in imports from Russia for the years 1973 through 1992.

(s)=Less than 500 barrels per day.

Notes: • Beginning in October 1977, Strategic Petroleum Reserve imports

are included. • U.S. geographic coverage is the 50 States and the District of Columbia.

Web Page: For annual data not displayed between 1973 and 1995, see <http://www.eia.doe.gov/emeu/mer/petro.html>.

Sources: • **1973-1975:** Bureau of Mines, Mineral Industry Surveys, *Petroleum Statement, Annual*, annual reports. • **1976-1980:** Energy Information Administration (EIA), Energy Data Reports, *Petroleum Statement, Annual*, annual reports. • **1981-2005:** EIA, *Petroleum Supply Annual*, annual reports. • **2006:** EIA, *Petroleum Supply Monthly*, monthly reports.

Table 3.3h Petroleum Imports From Trinidad and Tobago, United Kingdom, U.S. Virgin Islands, Other Non-OPEC, Total Non-OPEC, and Total Imports
(Thousand Barrels per Day)

	Non-OPEC ^{a,b}										Total Imports	
	Trinidad and Tobago		United Kingdom		U.S. Virgin Islands		Other Non-OPEC ^c		Total ^d			
	Total	Crude Oil	Total	Crude Oil	Total	Crude Oil	Total	Crude Oil	Total	Crude Oil	Total	Crude Oil
1973 Average	255	60	15	0	329	0	153	36	3,263	1,149	6,256	3,244
1975 Average	242	115	14	(s)	406	0	120	14	2,454	893	6,056	4,105
1980 Average	176	115	176	173	388	0	219	162	2,609	1,399	6,909	5,263
1985 Average	113	98	310	278	247	0	394	137	3,237	1,888	5,067	3,201
1990 Average	96	76	189	155	282	0	417	180	3,721	2,381	8,018	5,894
1995 Average	70	62	383	341	278	0	302	181	4,833	3,889	8,835	7,230
1996 Average	76	58	308	216	313	0	440	265	5,267	4,070	9,478	7,508
1997 Average	61	56	226	169	300	0	422	250	5,593	4,450	10,162	8,225
1998 Average	66	53	250	161	293	0	531	288	5,803	4,537	10,708	8,706
1999 Average	58	40	365	284	280	1	575	304	5,899	4,502	10,852	8,731
2000 Average	85	56	366	291	291	0	618	214	6,257	4,526	11,459	9,071
2001 Average	72	51	324	244	268	0	702	244	6,343	4,480	11,871	9,328
2002 Average	80	68	478	405	236	0	720	270	6,925	5,058	11,530	9,140
2003 Average	98	67	440	359	288	0	773	303	7,103	5,087	12,264	9,665
2004 Average	88	49	380	238	330	0	1,003	314	7,444	5,046	13,145	10,088
2005 January	84	50	328	197	305	0	989	376	7,515	5,119	12,991	9,997
February	86	56	337	190	330	0	1,374	502	7,889	5,154	13,749	10,219
March	100	64	451	294	278	0	940	320	7,870	5,565	13,230	10,242
April	136	87	399	256	358	0	1,077	292	7,859	5,231	13,476	10,224
May	126	84	348	194	367	0	1,182	369	8,133	5,412	14,006	10,432
June	140	70	422	269	331	0	1,296	474	8,485	5,718	14,270	10,765
July	89	52	406	259	323	0	1,076	381	7,825	5,162	13,925	10,377
August	130	68	442	321	299	0	1,283	393	8,175	5,531	13,848	10,404
September	104	25	413	209	289	0	1,474	372	8,144	4,885	13,229	9,155
October	125	74	455	231	413	0	1,564	307	8,796	5,048	14,208	9,444
November	117	70	504	229	303	0	1,373	359	8,713	5,621	14,096	10,262
December	112	62	251	33	335	0	1,000	223	8,117	5,269	13,548	9,996
Average	112	64	396	224	328	0	1,217	363	8,127	5,310	13,714	10,126
2006 January	138	96	187	36	277	0	1,322	323	8,054	5,131	13,576	9,713
February	62	20	205	82	318	0	1,182	382	7,873	5,125	13,320	9,897
March	126	52	299	145	299	0	1,040	384	7,749	5,291	12,887	9,828
April	135	80	315	169	239	0	1,291	310	7,883	4,977	13,360	9,832
May	156	95	349	174	373	0	1,271	285	8,441	5,269	14,223	10,247
June	141	82	355	185	273	0	1,284	467	8,495	5,813	14,143	10,681
July	102	59	340	229	353	0	1,312	368	8,332	5,387	13,837	10,153
August	86	52	262	107	377	0	1,327	437	8,894	5,626	14,612	10,537
September	103	78	239	121	396	0	1,440	615	8,537	5,628	14,375	10,703
October	105	58	205	74	335	0	1,244	581	7,800	5,348	13,324	10,132
November	103	71	291	119	331	0	1,121	383	7,802	5,225	12,955	9,837
December	143	60	199	93	334	0	1,016	343	7,479	4,961	12,711	9,584
Average	117	67	271	128	326	0	1,238	406	8,113	5,315	13,612	10,095

^a Organization of the Petroleum Exporting Countries.

^b The country of origin for petroleum products may not be the country of origin for the crude oil from which the products were produced. For example, refined products imported from West European refining areas may have been produced from Middle East crude oil.

^c Includes Bahrain, which is shown on Table 3.3a.

^d As of January 1993, includes petroleum imported from Ecuador, which withdrew from OPEC on December 31, 1992. As of January 1995, includes petroleum imported from Gabon, which withdrew from OPEC on December 31, 1994.

(s)=Less than 500 barrels per day.

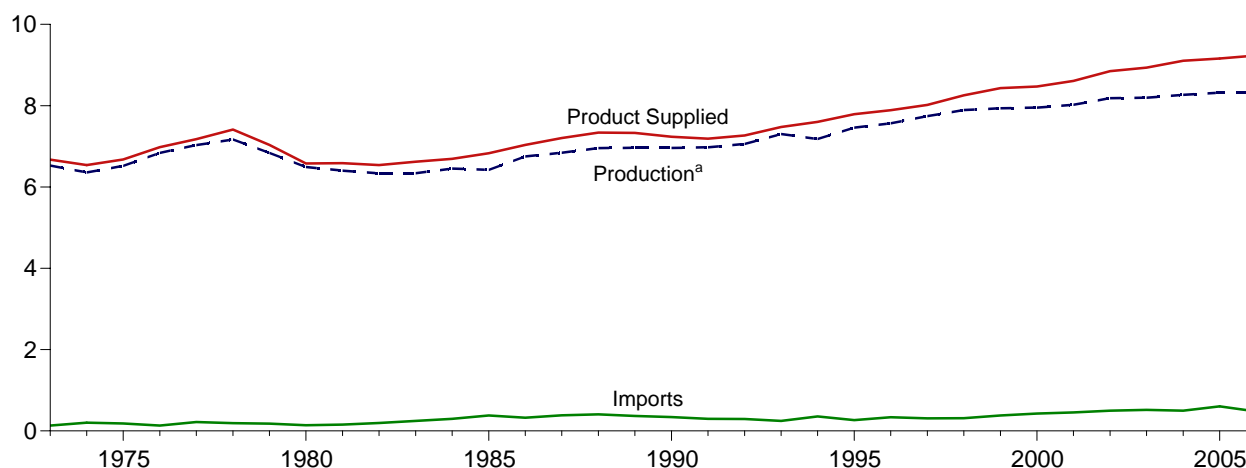
Notes: • Beginning in October 1977, Strategic Petroleum Reserve imports are included. • Totals may not equal sum of components due to independent rounding. • U.S. geographic coverage is the 50 States and the District of Columbia.

Web Page: For annual data not displayed between 1973 and 1995, see <http://www.eia.doe.gov/emeu/mer/petro.html>.

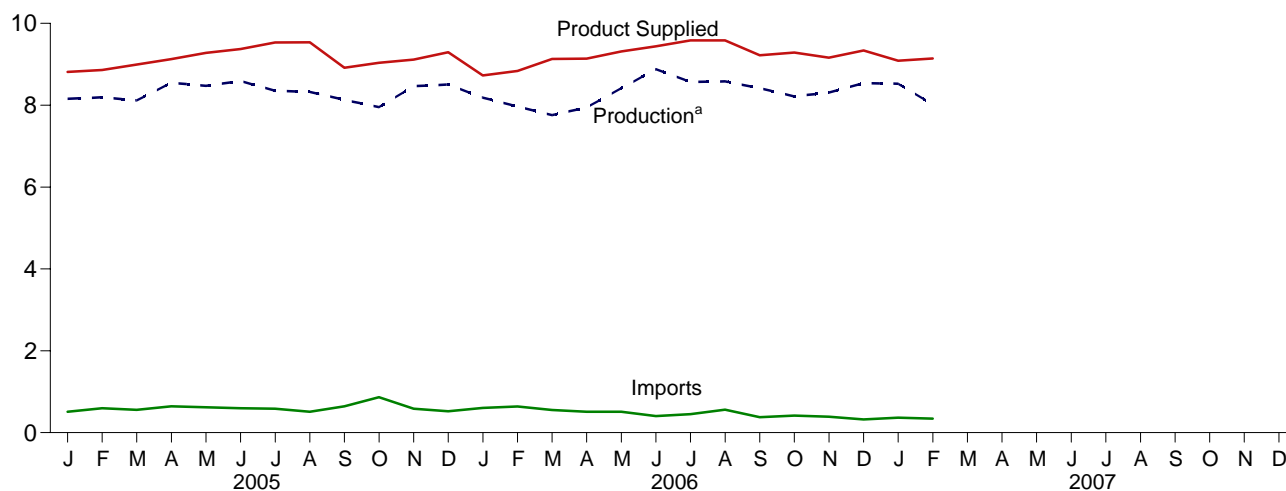
Sources: • **1973-1975:** Bureau of Mines, Mineral Industry Surveys, *Petroleum Statement, Annual*, annual reports. • **1976-1980:** Energy Information Administration (EIA), *Petroleum Statement, Annual*, annual reports. • **1981-2005:** EIA, *Petroleum Supply Annual*, annual reports. • **2006:** EIA, *Petroleum Supply Monthly*, monthly reports.

Figure 3.2 Finished Motor Gasoline
(Million Barrels per Day, Except as Noted)

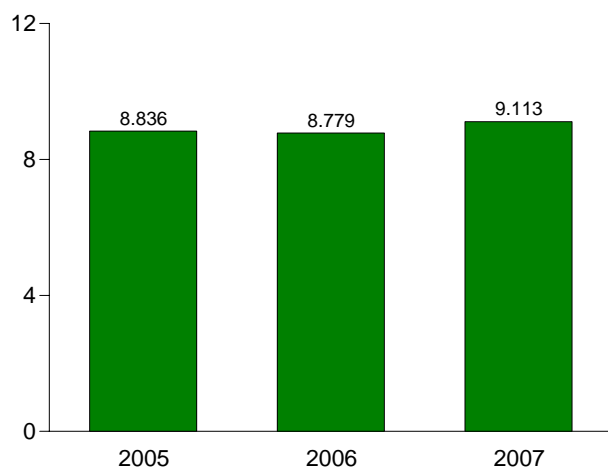
Overview, 1973-2006



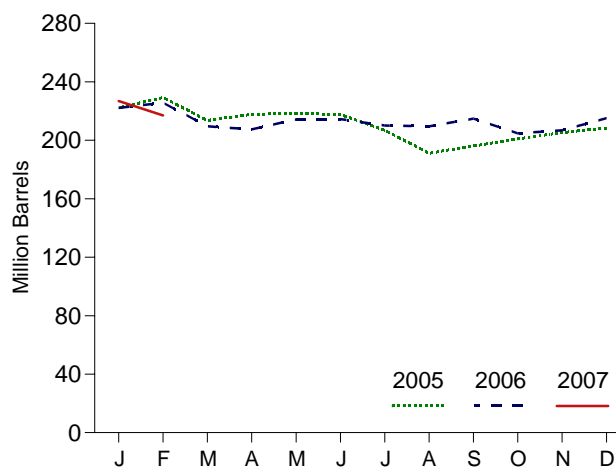
Overview, Monthly



Product Supplied, January-February



Total Stocks, End of Month



^aRefinery and blender net production.

Note: Because vertical scales differ, graphs should not be compared.

Web Page: <http://www.eia.doe.gov/emeu/mer/petro.html>.

Source: Table 3.4.

Table 3.4 Finished Motor Gasoline Supply, Disposition, and Stocks

	Supply			Disposition			Stocks ^a		
	Refinery and Blender Net Production	Imports ^b	Adjust-ments ^c	Stock Change ^{b,d,e}	Exports	Product Supplied	Motor Gasoline		Oxygenates ^g
							Finished	Total ^{e,f}	
Thousand Barrels per Day						Million Barrels			
1973 Average	6,527	134	8	-9	4	6,674	NA	209	NA
1975 Average	6,518	184	3	^e 28	2	6,675	NA	235	NA
1980 Average	6,492	140	14	66	1	6,579	NA	^e 261	NA
1985 Average	6,419	381	(s)	-41	10	6,831	190	223	NA
1990 Average	6,959	342	(s)	10	55	7,235	181	220	NA
1995 Average	7,459	265	130	-40	104	7,789	161	202	12
1996 Average	7,565	336	82	-12	104	7,891	157	195	13
1997 Average	7,743	309	127	26	137	8,017	166	210	12
1998 Average	7,892	311	190	15	125	8,253	172	216	14
1999 Average	7,934	382	177	-49	111	8,431	154	193	14
2000 Average	7,951	427	235	-3	144	8,472	153	196	12
2001 Average	8,022	454	290	23	133	8,610	161	210	13
2002 Average	8,183	498	292	1	124	8,848	162	209	12
2003 Average	8,194	518	307	-41	125	8,935	147	207	11
2004 Average	8,265	496	458	-10	124	9,105	143	218	11
2005 January	8,157	510	371	79	146	8,813	146	222	11
February	8,194	598	233	26	137	8,861	146	229	11
March	8,119	558	137	-322	142	8,994	136	214	11
April	8,549	642	207	156	114	9,128	141	218	10
May	8,475	618	352	-12	178	9,278	141	218	11
June	8,589	596	343	8	147	9,373	141	218	10
July	8,352	583	509	-238	148	9,534	134	207	9
August	8,326	511	501	-356	157	9,537	123	191	8
September	8,129	644	397	160	95	8,915	127	196	8
October	7,953	866	425	128	80	9,036	131	201	9
November	8,468	584	298	138	96	9,115	135	205	9
December	8,503	524	463	12	182	9,296	136	208	9
Average	8,318	603	354	-20	136	9,159	136	208	9
2006 January	8,185	605	311	274	101	8,727	143	222	9
February	7,969	638	263	-87	122	8,836	141	226	11
March	7,760	554	454	-528	166	9,129	124	210	11
April	7,946	510	522	-289	127	9,140	116	207	11
May	8,414	512	737	181	170	9,312	121	214	10
June	8,878	406	247	-57	150	9,440	120	214	9
July	8,566	450	690	-43	166	9,583	118	210	10
August	8,584	560	476	-56	91	9,585	117	210	11
September	8,415	376	700	132	137	9,222	121	215	12
October	8,214	415	571	-240	153	9,286	113	205	11
November	8,310	388	697	72	162	9,160	115	207	11
December	^R 8,538	^R 324	^R 726	^R 96	^R 156	^R 9,335	^R 118	^R 215	^R 11
Average	^R 8,317	^R 477	^R 535	^R -45	^R 142	^R 9,233	^R 118	^R 215	^R 11
2007 January	^E 8,524	^E 364	^E 572	^E 248	^E 124	^E 9,088	^E 125	^E 227	NA
February	^E 8,019	^E 342	^E 697	^E -211	^E 128	^E 9,141	^E 119	^E 217	NA
2-Month Average	^E 8,284	^E 354	^E 631	^E 30	^E 126	^E 9,113	^E 119	^E 217	NA
2006 2-Month Average	8,083	621	288	103	111	8,779	141	226	11
2005 2-Month Average	8,174	552	305	54	142	8,836	146	229	11

^a Stocks are at end of period.

^b Beginning in 1981, excludes motor gasoline blending components.

^c An adjustment for motor gasoline blending components and fuel ethanol. Through 2004, includes what was previously classified as "Field Production" of finished motor gasoline.

^d A negative number indicates a decrease in stocks and a positive number indicates an increase. The current month stock change estimate is based on the change from the previous month's stocks estimate, rather than the actual stocks value shown in this table.

^e See Note 4, "New Stock Basis," at end of section.

^f Includes motor gasoline blending components and gasohol, but excludes oxygenates, which are reported separately.

^g See Note 1, "Survey Respondents," at end of section.

R=Revised. E=Estimate. NA=Not available. (s)=Less than 500 barrels per day.

Notes: • See Note 2, "Motor Gasoline," at end of section. • Geographic coverage is the 50 States and the District of Columbia.

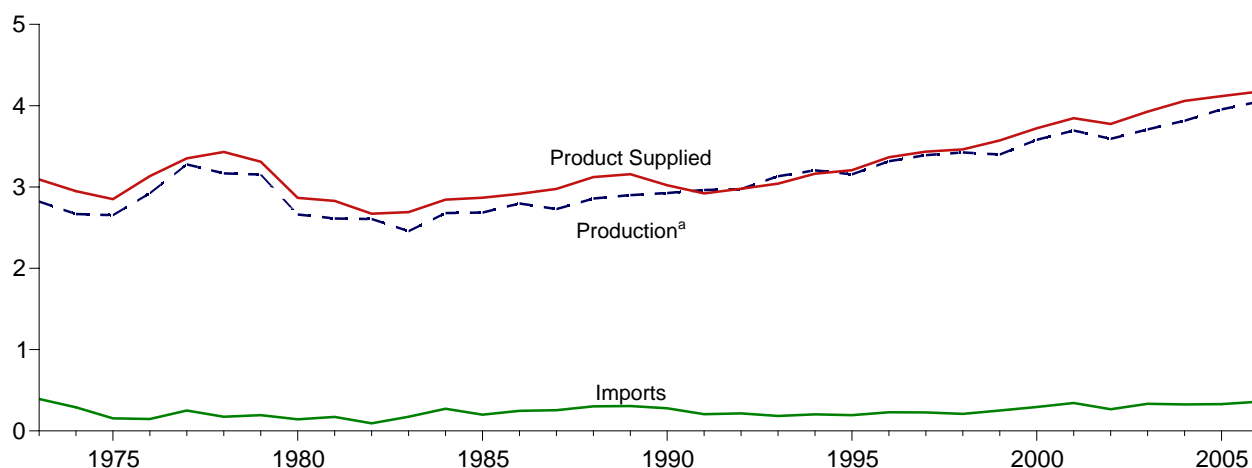
Web Page: For annual data not displayed between 1973 and 1995, see <http://www.eia.doe.gov/emeu/mer/petro.html>.

Sources: • **1973-1975:** Bureau of Mines, Mineral Industry Surveys, *Petroleum Statement, Annual*, annual reports. • **1976-1980:** Energy Information Administration (EIA), *Petroleum Statement, Annual*, annual reports.

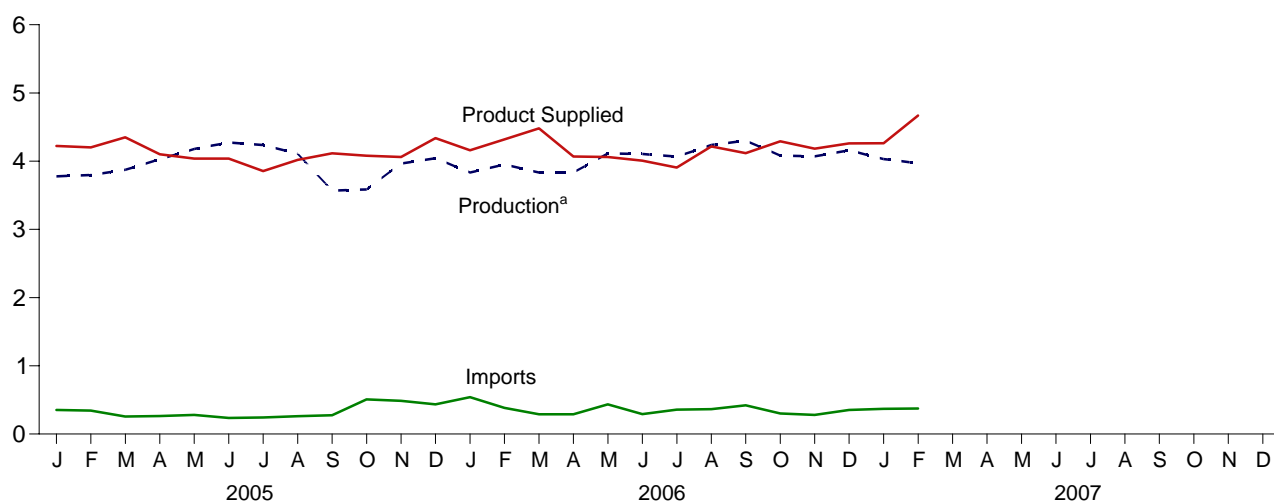
• **1981-2005:** EIA, *Petroleum Supply Annual*, annual reports. • **2006 and 2007:** EIA, *Petroleum Supply Monthly*, monthly reports; and, for the current two months, *Weekly Petroleum Status Report* data system, and *Monthly Energy Review* data system calculations.

Figure 3.3 Distillate Fuel Oil
(Million Barrels per Day, Except as Noted)

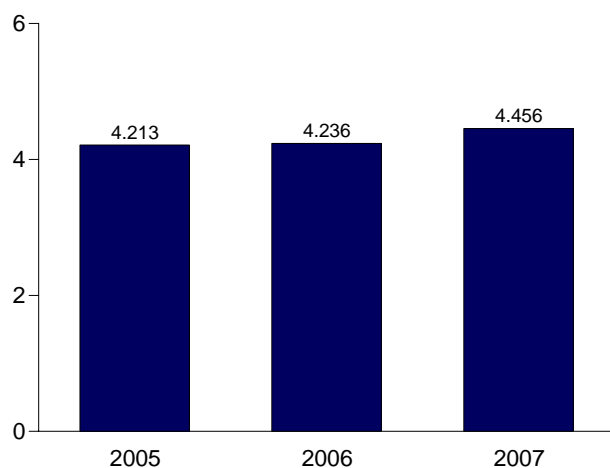
Overview, 1973-2006



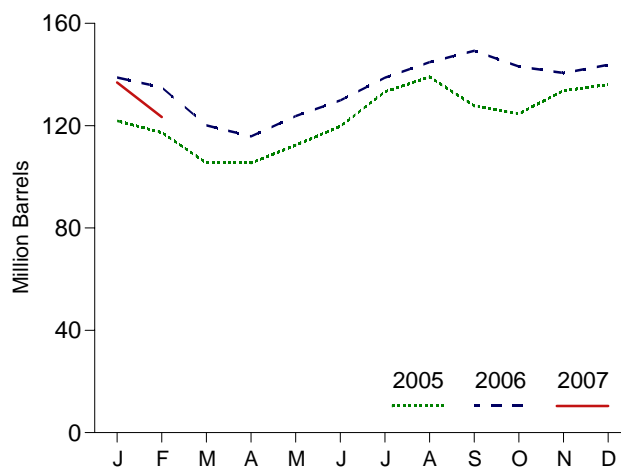
Overview, Monthly



Product Supplied, January-February



Total Stocks, End of Month



^aRefinery net production.

Note: Because vertical scales differ, graphs should not be compared.

Web Page: <http://www.eia.doe.gov/emeu/mer/petro.html>.

Source: Table 3.5.

Table 3.5 Distillate Fuel Oil Supply, Disposition, and Stocks

	Supply			Disposition			Stocks ^a			
	Refinery Net Production	Imports	Adjust- ments ^c	Stock Change ^{d,e,f}	Exports	Product Supplied	Sulfur Content ^b			Total ^f
							<= 15 ppm	> 15 ppm and <= 500 ppm	> 500 ppm	
Thousand Barrels per Day						Million Barrels				
1973 Average	2,820	392	4	115	9	3,092	NA	NA	NA	196
1975 Average	2,653	155	2	e,f,-41	1	2,851	NA	NA	NA	209
1980 Average	2,661	142	2	-64	3	2,866	NA	NA	NA	205
1985 Average	2,686	200	2	-48	67	2,868	NA	NA	NA	144
1990 Average	2,925	278	—	73	109	3,021	NA	NA	NA	132
1995 Average	3,155	193	—	-41	183	3,207	(^g)	67	63	130
1996 Average	3,316	230	—	-10	190	3,365	(^g)	68	58	127
1997 Average	3,392	228	—	32	152	3,435	(^g)	68	70	138
1998 Average	3,424	210	—	48	124	3,461	(^g)	77	79	156
1999 Average	3,399	250	—	-84	162	3,572	(^g)	69	56	125
2000 Average	3,580	295	—	-20	173	3,722	(^g)	72	46	118
2001 Average	3,695	344	—	73	119	3,847	(^g)	82	62	145
2002 Average	3,592	267	—	-29	112	3,776	(^g)	81	53	134
2003 Average	3,707	333	—	7	107	3,927	(^g)	82	55	137
2004 Average	3,814	325	—	-28	110	4,058	1	75	50	126
2005 January	3,777	353	—	-141	49	4,223	1	74	47	122
February	3,797	344	—	-163	102	4,202	1	72	44	117
March	3,874	257	—	-383	165	4,349	1	68	37	105
April	4,028	264	—	-1	192	4,101	1	66	39	105
May	4,179	281	—	225	199	4,037	1	70	42	112
June	4,274	236	—	245	227	4,038	1	69	49	120
July	4,236	243	—	437	189	3,854	1	76	56	133
August	4,108	263	—	187	163	4,020	1	77	60	139
September	3,570	275	—	-378	108	4,116	1	67	59	128
October	3,585	507	—	-97	109	4,079	1	67	56	125
November	3,966	486	—	299	92	4,061	1	73	60	134
December	4,044	435	—	75	65	4,339	2	77	57	136
Average	3,954	329	—	27	138	4,118	2	77	57	136
2006 January	3,833	541	—	90	123	4,161	2	78	58	139
February	3,952	385	—	-138	156	4,318	2	80	53	135
March	3,835	289	—	-477	120	4,481	2	74	45	120
April	3,833	291	—	-145	200	4,069	3	68	45	116
May	4,114	434	—	257	229	4,062	11	66	47	124
June	4,106	292	—	204	187	4,007	24	52	54	130
July	4,067	357	—	287	231	3,906	35	46	58	139
August	4,237	366	—	196	191	4,215	43	42	60	145
September	4,300	422	—	148	456	4,118	54	33	62	149
October	4,083	301	—	-199	291	4,292	53	27	63	143
November	4,070	280	—	-84	252	4,183	53	25	63	141
December	R 4,159	R 352	—	R 102	R 149	R 4,260	R 57	R 27	R 60	R 144
Average	R 4,049	R 359	—	R 21	R 215	4,172	R 57	R 27	R 60	R 144
2007 January	E 4,032	E 370	—	E -33	E 170	E 4,264	E 59	E 24	E 54	E 137
February	E 3,970	E 373	—	E -482	E 157	E 4,668	E 57	E 23	E 44	E 123
2-Month Average	E 4,003	E 371	—	E -246	E 164	E 4,456	E 57	E 23	E 44	E 123
2006 2-Month Average	3,890	467	—	-18	139	4,236	2	80	53	135
2005 2-Month Average	3,787	349	—	-152	74	4,213	1	72	44	117

^a Stocks are at end of period.

^b By weight; "ppm" is parts per million.

^c Through 1982, includes what was previously classified as "Crude Oil Used Directly" (as distillate fuel oil). Through 1988, also includes a small amount of distillate fuel oil production at natural gas processing plants.

^d A negative number indicates a decrease in stocks and a positive number indicates an increase. The current month stock change estimate is based on the change from the previous month's stocks estimate, rather than the actual stocks value shown in this table.

^e See Note 6, "Data Discrepancies," at end of section.

^f See Note 4, "New Stock Basis," at end of section.

^g Included in "> 15 ppm and <= 500 ppm."

R=Revised. E=Estimate. NA=Not available. - =Not applicable.

Notes: • See Note 3, "Distillate and Residual Fuel Oils," at end of section.

• Totals may not equal sum of components due to independent rounding.

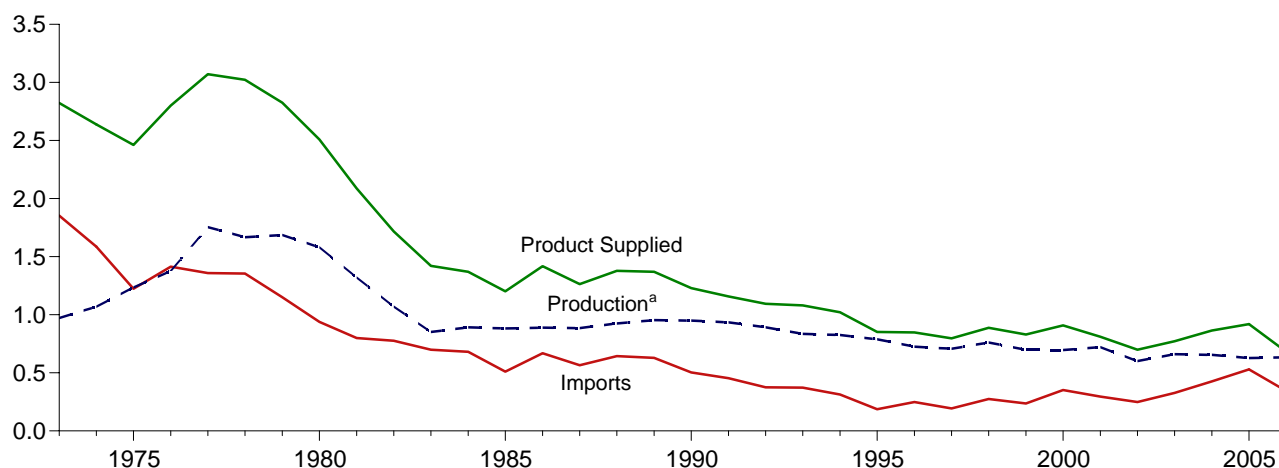
• Geographic coverage is the 50 States and the District of Columbia.

Web Page: For annual data not displayed between 1973 and 1995, see <http://www.eia.doe.gov/emeu/mer/mer/petro.html>.

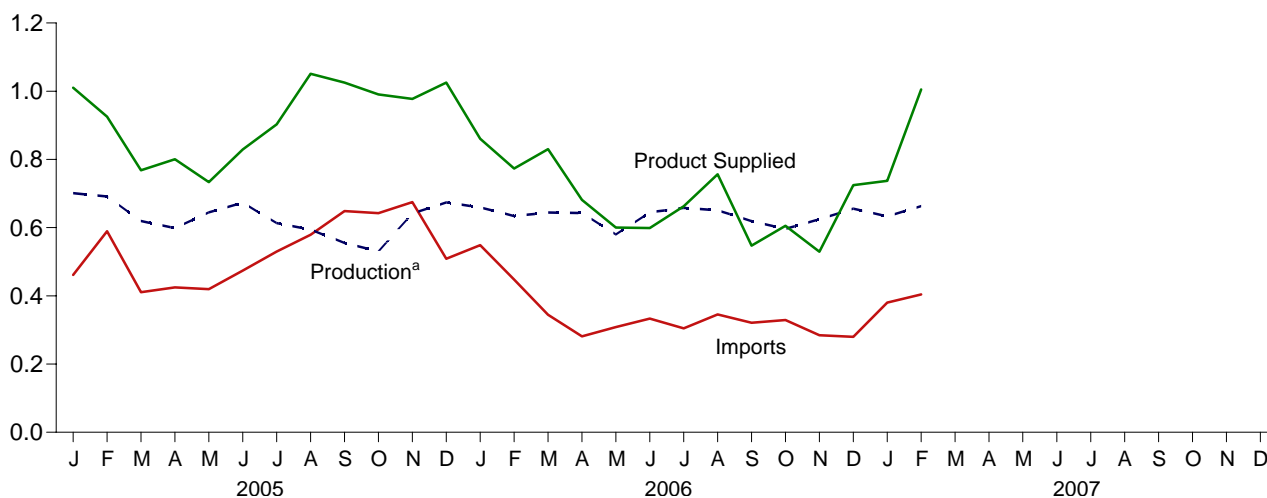
Sources: • **1973-1975:** Bureau of Mines, Mineral Industry Surveys, *Petroleum Statement, Annual*, annual reports. • **1976-1980:** Energy Information Administration (EIA), Energy Data Reports, *Petroleum Statement, Annual*, annual reports. • **1981-2005:** EIA, *Petroleum Supply Annual*, annual reports. • **2006 and 2007:** EIA, *Petroleum Supply Monthly*, monthly reports; and, for the current two months, *Weekly Petroleum Status Report* data system, and *Monthly Energy Review* data system calculations.

Figure 3.4 Residual Fuel Oil
(Million Barrels per Day, Except as Noted)

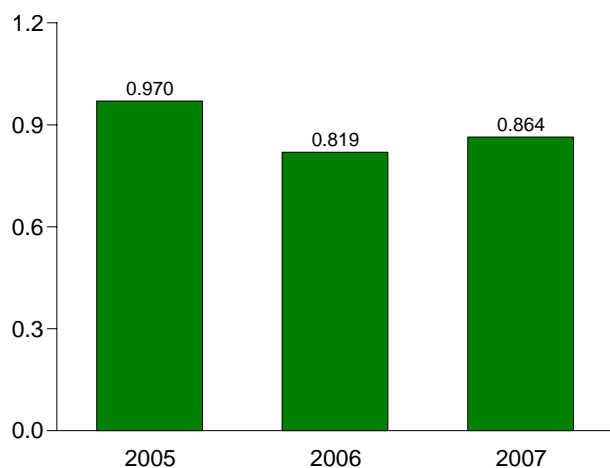
Overview, 1973-2006



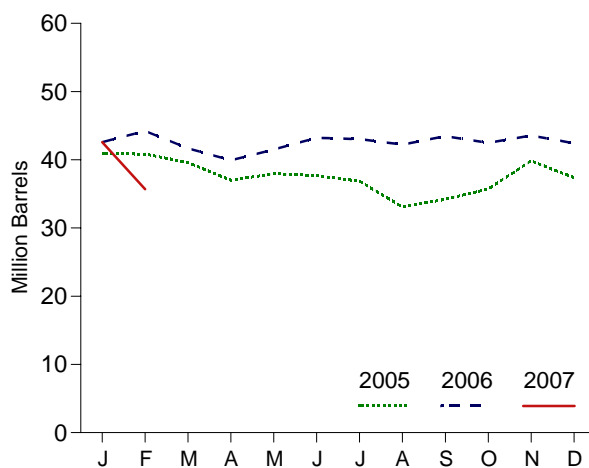
Overview, Monthly



Product Supplied, January-February



Total Stocks, End of Month



^aRefinery net production.

Note: Because vertical scales differ, graphs should not be compared.

Web Page: <http://www.eia.doe.gov/emeu/mer/petro.html>
Source: Table 3.6.

Table 3.6 Residual Fuel Oil Supply, Disposition, and Stocks

	Supply			Disposition			Stocks ^a			
	Refinery Net Production	Imports	Adjust- ments ^c	Stock Change ^{d,e}	Exports	Product Supplied	Sulfur Content ^b			Total ^e
							< 0.31%	≥ 0.31% and ≤ 1.00%	> 1.00%	
Thousand Barrels per Day							Million Barrels			
1973 Average	971	1,853	17	-5	23	2,822	NA	NA	NA	53
1975 Average	1,235	1,223	15	^e -2	15	2,462	NA	NA	NA	74
1980 Average	1,580	939	12	-10	33	2,508	NA	NA	NA	^e 92
1985 Average	882	510	—	-7	197	1,202	NA	NA	NA	50
1990 Average	950	504	—	13	211	1,229	NA	NA	NA	49
1995 Average	788	187	—	-13	136	852	NA	NA	NA	37
1996 Average	726	248	—	24	102	848	NA	NA	NA	46
1997 Average	708	194	—	-15	120	797	NA	NA	NA	40
1998 Average	762	275	—	12	138	887	NA	NA	NA	45
1999 Average	698	237	—	-25	129	830	NA	NA	NA	36
2000 Average	696	352	—	1	139	909	NA	NA	NA	36
2001 Average	721	295	—	13	191	811	NA	NA	NA	41
2002 Average	601	249	—	-27	177	700	NA	NA	NA	31
2003 Average	660	327	—	18	197	772	5	13	19	38
2004 Average	655	426	—	12	205	865	6	14	22	42
2005 January	701	461	—	-48	200	1,010	5	15	21	41
February	691	590	—	-2	358	925	5	14	22	41
March	619	411	—	-39	301	768	5	13	21	40
April	598	425	—	-87	310	800	5	14	19	37
May	645	420	—	31	300	733	4	13	21	38
June	673	474	—	-9	326	829	4	12	22	38
July	614	530	—	-27	268	903	5	11	21	37
August	594	579	—	-122	244	1,051	4	9	20	33
September	555	649	—	38	141	1,025	4	11	20	34
October	530	642	—	49	134	990	4	10	21	36
November	642	675	—	138	202	977	5	13	21	40
December	674	509	—	-79	236	1,025	6	12	20	37
Average	628	530	—	-14	251	920	6	12	20	37
2006 January	659	548	—	169	178	861	6	14	22	43
February	634	448	—	59	249	773	6	16	22	44
March	644	344	—	-82	241	830	6	15	21	42
April	643	281	—	-58	300	682	5	14	21	40
May	580	308	—	50	238	600	6	14	21	41
June	645	333	—	57	323	599	6	16	22	43
July	658	305	—	-6	306	663	6	14	23	43
August	651	345	—	-25	265	756	6	15	21	42
September	619	321	—	40	353	547	7	14	23	43
October	597	329	—	-31	351	605	7	14	22	42
November	624	285	—	35	344	530	6	16	22	44
December	^R 656	^R 280	—	^R -37	^R 248	^R 725	^R 6	^R 14	^R 21	^R 42
Average	^R 634	^R 344	—	^R 14	^R 283	^R 681	^R 6	^R 14	^R 21	^R 42
2007 January	^E 633	^E 380	—	^E -17	^E 292	^E 737	NA	NA	NA	^E 43
February	^E 663	^E 404	—	^E -247	^E 308	^E 1,005	NA	NA	NA	^E 36
2-Month Average	^E 647	^E 391	—	^E -126	^E 300	^E 864	NA	NA	NA	^E 36
2006 2-Month Average	647	501	—	117	212	819	6	16	22	44
2005 2-Month Average	696	522	—	-26	275	970	5	14	22	41

^a Stocks are at end of period.

^b By weight. Residual fuel oil stocks by sulfur content exclude pipeline stocks; therefore, the sum of stocks by sulfur content may not equal total stocks.

^c Through 1982, includes what was previously classified as "Crude Oil Used Directly" (as residual fuel oil).

^d A negative number indicates a decrease in stocks and a positive number indicates an increase. The current month stock change estimate is based on the change from the previous month's stocks estimate, rather than the actual stocks value shown in this table.

^e See Note 4, "New Stock Basis," at end of section.

R=Revised. E=Estimate. NA=Not available. —=Not applicable.

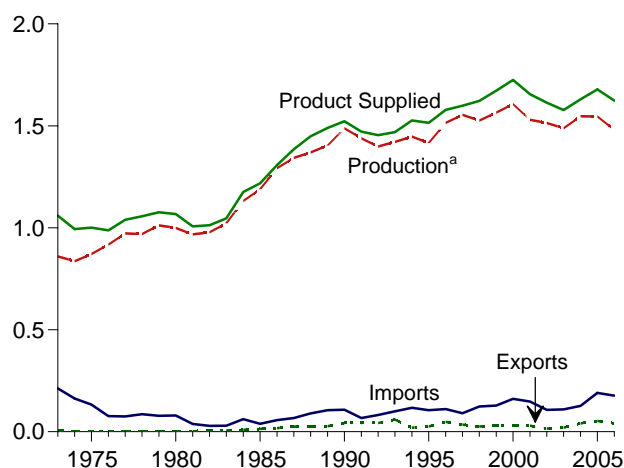
Notes: • See Note 3, "Distillate and Residual Fuel Oils," at end of section. • Geographic coverage is the 50 States and the District of Columbia.

Web Page: For annual data not displayed between 1973 and 1995, see <http://www.eia.doe.gov/emeu/mer/petro.html>.

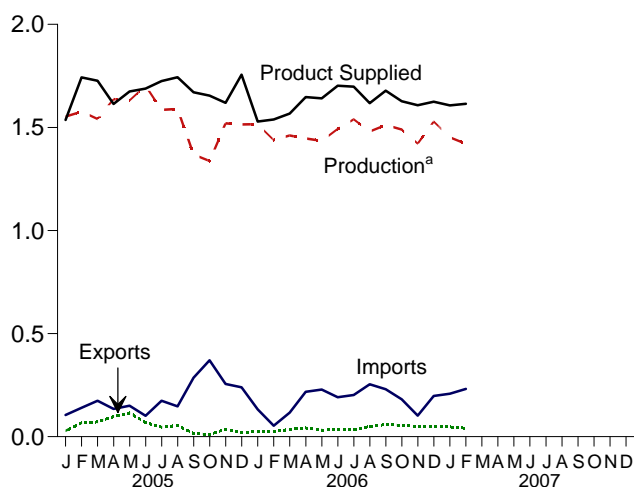
Sources: • **1973-1975:** Bureau of Mines, Mineral Industry Surveys, *Petroleum Statement, Annual*, annual reports. • **1976-1980:** Energy Information Administration (EIA), *Energy Data Reports, Petroleum Statement, Annual*, annual reports. • **1981-2005:** EIA, *Petroleum Supply Annual*, annual reports. • **2006 and 2007:** EIA, *Petroleum Supply Monthly*, monthly reports; and, for the current two months, *Weekly Petroleum Status Report* data system, and *Monthly Energy Review* data system calculations.

Figure 3.5 Jet Fuel
(Million Barrels Per Day, Except as Noted)

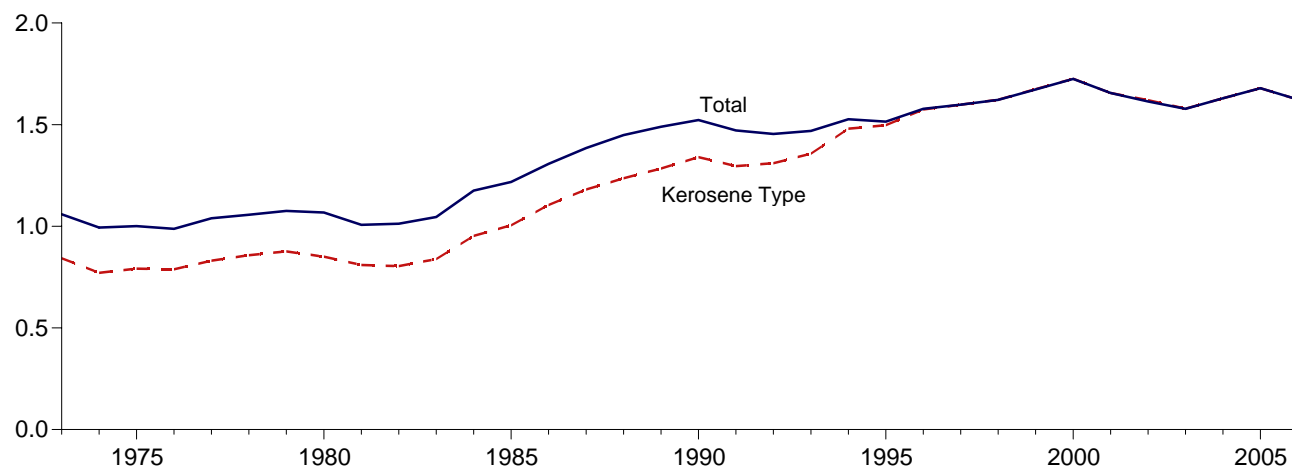
Overview, 1973-2006



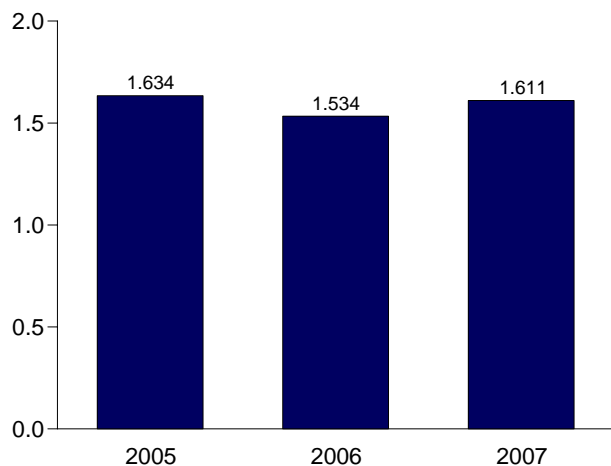
Overview, Monthly



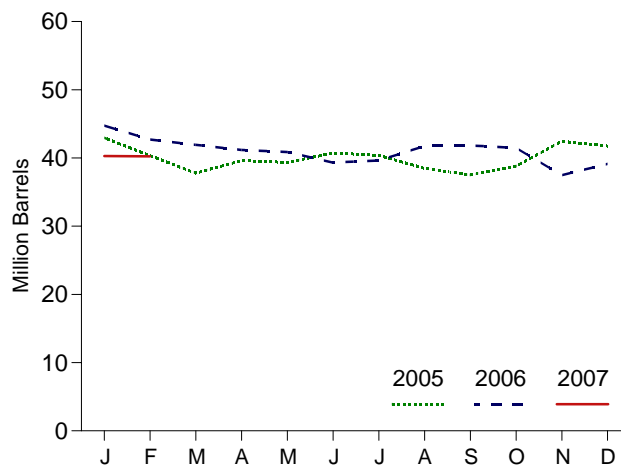
Product Supplied by Type, 1973-2006



Product Supplied, January-February



Total Stocks, End of Month



^aRefinery net production.

Notes: • Through 2004, includes naphtha-type jet fuel. Beginning in 2005, naphtha-type jet fuel is included in "Other Petroleum Products" on Table

3.10. • Because vertical scales differ, graphs should not be compared.
Web Page: <http://www.eia.doe.gov/emeu/mer/petro.html>.
Source: Table 3.7.

Table 3.7 Jet Fuel Supply, Disposition, and Stocks

	Supply			Disposition				Stocks ^a	
	Refinery Net Production		Imports ^b	Stock Change ^{b,c}	Exports ^b	Product Supplied		Kerosene Type	Total ^b
	Kerosene Type	Total ^b				Kerosene Type	Total ^b		
	Thousand Barrels per Day							Million Barrels	
1973 Average	679	859	212	8	4	842	1,059	23	29
1975 Average	691	871	133	^d 2	2	791	1,001	25	30
1980 Average	811	999	80	10	1	851	1,068	^d 36	^d 42
1985 Average	983	1,189	39	-4	13	1,005	1,218	34	40
1990 Average	1,311	1,488	108	31	43	1,340	1,522	46	52
1995 Average	1,407	1,416	106	-19	26	1,497	1,514	39	40
1996 Average	1,513	1,515	111	(s)	48	1,575	1,578	40	40
1997 Average	1,554	1,554	91	11	35	1,598	1,599	44	44
1998 Average	1,525	1,526	124	2	26	1,623	1,622	45	45
1999 Average	1,565	1,565	128	-11	32	1,675	1,673	40	41
2000 Average	1,606	1,606	162	11	32	1,725	1,725	44	45
2001 Average	1,529	1,530	148	-7	29	1,656	1,655	42	42
2002 Average	1,514	1,514	107	-8	15	1,621	1,614	39	39
2003 Average	1,489	1,488	109	-1	20	1,578	1,578	39	39
2004 Average	1,547	1,547	127	4	40	1,630	1,630	40	40
2005 January	1,552	1,552	105	93	28	1,536	1,536	43	43
February	1,576	1,576	140	-94	67	1,743	1,743	40	40
March	1,541	1,541	174	-83	72	1,726	1,726	38	38
April	1,638	1,638	135	61	98	1,614	1,614	40	40
May	1,631	1,631	150	-8	115	1,674	1,674	39	39
June	1,701	1,701	102	46	68	1,689	1,689	41	41
July	1,585	1,585	174	-12	46	1,725	1,725	40	40
August	1,590	1,590	147	-61	55	1,743	1,743	38	38
September	1,368	1,368	286	-32	16	1,670	1,670	38	38
October	1,337	1,337	371	42	11	1,655	1,655	39	39
November	1,520	1,520	256	121	36	1,619	1,619	42	42
December	1,515	1,515	239	-23	21	1,756	1,756	42	42
Average	1,546	1,546	190	5	53	1,679	1,679	42	42
2006 January	1,515	1,515	133	95	24	1,529	1,529	45	45
February	1,438	1,438	54	-72	25	1,539	1,539	43	43
March	1,461	1,461	117	-25	36	1,567	1,567	42	42
April	1,446	1,446	218	-25	42	1,647	1,647	41	41
May	1,435	1,435	229	-10	32	1,641	1,641	41	41
June	1,493	1,493	191	-52	34	1,702	1,702	39	39
July	1,540	1,540	202	10	34	1,698	1,698	40	40
August	1,480	1,480	254	68	49	1,618	1,618	42	42
September	1,511	1,511	230	4	60	1,678	1,678	42	42
October	1,490	1,490	181	-12	56	1,627	1,627	41	41
November	1,422	1,422	102	-134	49	1,608	1,608	37	37
December	^R 1,529	^R 1,529	^R 198	^R 54	^R 48	^R 1,625	^R 1,625	^R 39	^R 39
Average	^R 1,481	^R 1,481	^R 177	-7	41	^R 1,624	^R 1,624	^R 39	^R 39
2007 January	^E 1,452	^E 1,452	^E 208	^E 6	^E 47	^E 1,607	^E 1,607	^E 40	^E 40
February	^E 1,421	^E 1,421	^E 232	^E -2	^E 41	^E 1,615	^E 1,615	^E 40	^E 40
2-Month Average	^E 1,437	^E 1,437	^E 219	^E 2	^E 44	^E 1,611	^E 1,611	^E 40	^E 40
2006 2-Month Average	1,479	1,479	95	16	25	1,534	1,534	43	43
2005 2-Month Average	1,564	1,564	122	4	47	1,634	1,634	40	40

^a Stocks are at end of period.

^b Through 2004, includes kerosene-type and naphtha-type jet fuel. Beginning in 2005, includes kerosene-type jet fuel only; naphtha-type jet fuel is included in "Other Petroleum Products" on Table 3.10.

^c A negative number indicates a decrease in stocks and a positive number indicates an increase. The current month stock change estimate is based on the change from the previous month's stocks estimate, rather than the actual stocks value shown in this table.

^d See Note 4, "New Stock Basis," at end of section.

R=Revised. E=Estimate. (s)=Less than +500 barrels per day and greater than -500 barrels per day.

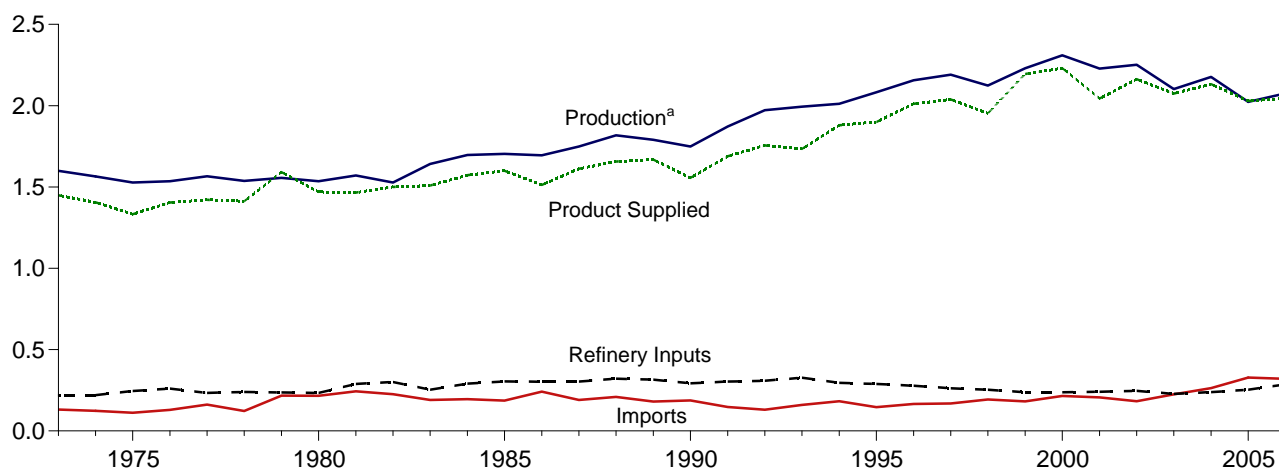
Note: Geographic coverage is the 50 States and the District of Columbia.

Web Page: For annual data not displayed between 1973 and 1995, see <http://www.eia.doe.gov/emeu/mer/petro.html>.

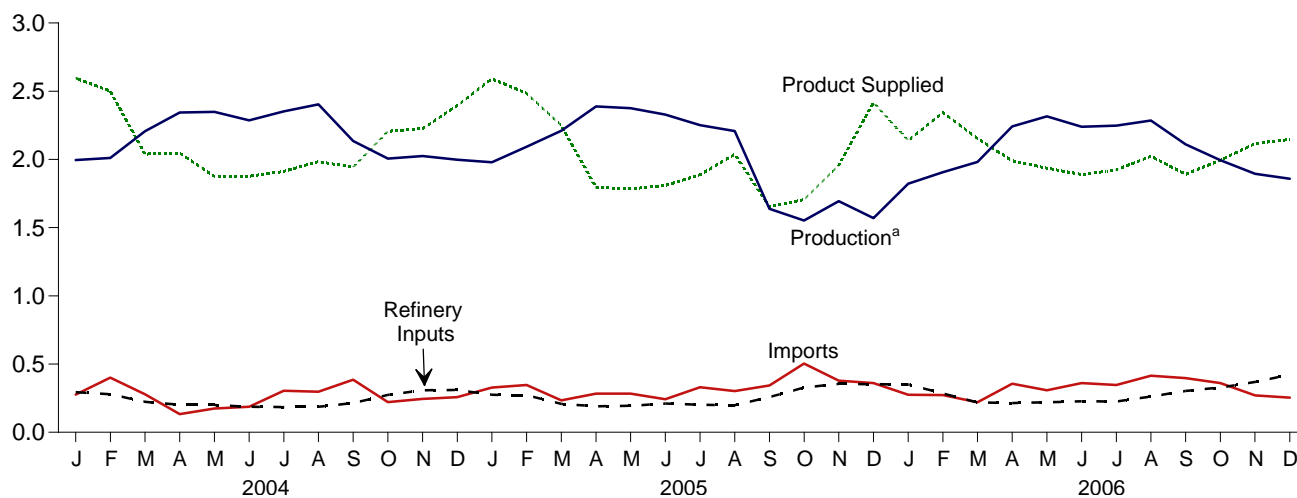
Sources: • **1973-1975:** Bureau of Mines, Mineral Industry Surveys, *Petroleum Statement, Annual*, annual reports. • **1976-1980:** Energy Information Administration (EIA), Energy Data Reports, *Petroleum Statement, Annual*, annual reports. • **1981-2005:** EIA, *Petroleum Supply Annual*, annual reports. • **2006 and 2007:** EIA, *Petroleum Supply Monthly*, monthly reports; and, for the current two months, *Weekly Petroleum Status Report* data system, and *Monthly Energy Review* data system calculations.

Figure 3.6 Liquefied Petroleum Gases
(Million Barrels per Day, Except as Noted)

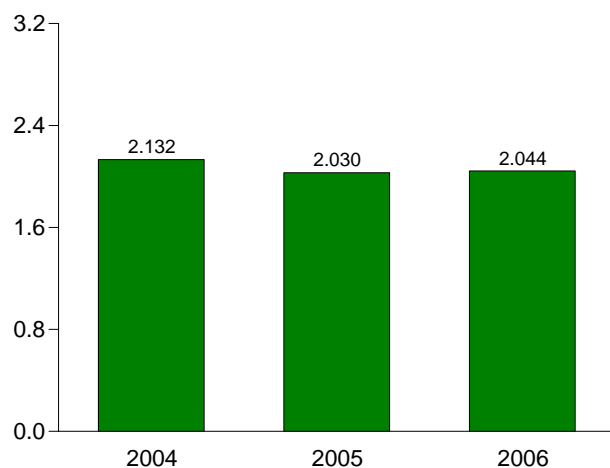
Overview, 1973-2006



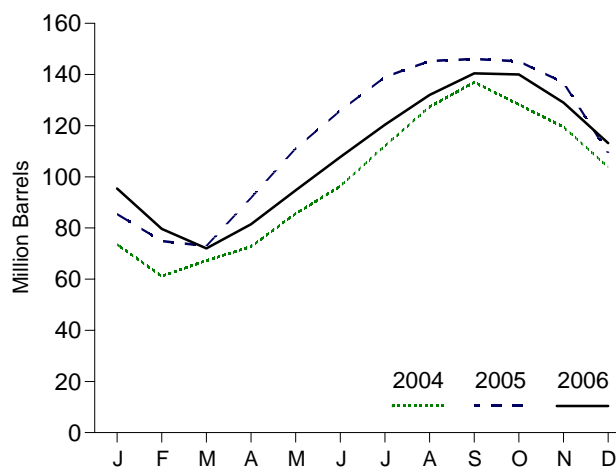
Overview, Monthly



Product Supplied, January-December



Stocks, End of Month



^aField production and refinery net production.
Note: Because vertical scales differ, graphs should not be compared.

Web Page: <http://www.eia.doe.gov/emeu/mer/petro.html>.
Source: Table 3.8.

Table 3.8 Liquefied Petroleum Gases Supply, Disposition, and Stocks

	Supply			Disposition				Stocks ^c
	Field Production ^a	Refinery Net Production	Imports	Stock Change ^b	Refinery Inputs	Exports	Product Supplied	
Thousand Barrels per Day								Million Barrels
1973 Average	1,225	375	132	35	220	27	1,449	99
1975 Average	1,217	311	112	^d 35	246	26	1,333	125
1980 Average	1,205	330	216	27	233	21	1,469	^d 120
1985 Average	1,313	391	187	-75	304	62	1,599	74
1990 Average	1,250	499	188	48	293	40	1,556	98
1995 Average	1,428	654	146	-17	289	58	1,899	93
1996 Average	1,494	662	166	-19	278	51	2,012	86
1997 Average	1,499	691	169	9	263	50	2,038	89
1998 Average	1,450	674	194	70	253	42	1,952	115
1999 Average	1,547	684	182	-71	238	50	2,195	89
2000 Average	1,605	705	215	-19	238	74	2,231	83
2001 Average	1,562	667	206	105	241	44	2,044	121
2002 Average	1,581	671	183	-42	247	67	2,163	106
2003 Average	1,444	658	225	-31	228	56	2,074	94
2004 Average	1,532	645	263	25	238	43	2,132	104
2005 January	1,552	427	328	-592	275	33	2,592	85
February	1,609	484	347	-376	272	59	2,485	75
March	1,604	607	234	-63	208	51	2,248	73
April	1,568	820	283	628	190	58	1,795	92
May	1,563	812	283	621	195	58	1,785	111
June	1,490	838	243	496	210	56	1,809	126
July	1,455	796	330	423	201	70	1,887	139
August	1,445	763	301	202	198	71	2,037	145
September	1,245	393	343	26	258	43	1,653	146
October	1,293	259	504	-30	328	51	1,706	145
November	1,373	322	379	-276	355	38	1,957	137
December	1,224	346	360	-887	352	48	2,416	109
Average	1,451	573	328	15	253	53	2,030	109
2006 January	1,440	382	275	-455	351	63	2,138	95
February	1,433	474	273	-564	284	113	2,345	80
March	1,443	539	220	-245	219	75	2,153	72
April	1,469	773	356	314	214	81	1,990	81
May	1,483	833	308	428	220	41	1,935	95
June	1,478	762	361	434	227	51	1,888	108
July	1,479	769	347	408	225	38	1,923	120
August	1,454	831	415	376	262	40	2,022	132
September	1,504	607	397	282	303	32	1,891	140
October	1,499	496	361	-15	327	48	1,994	140
November	1,511	383	271	-367	369	47	2,117	129
December	1,486	372	254	-511	423	53	2,146	113
Average	1,473	602	320	10	285	56	2,044	113

^a Liquefied petroleum gases production at natural gas processing plants.

^b A negative number indicates a decrease in stocks and a positive number indicates an increase.

^c Stocks are at end of period.

^d See Note 4, "New Stock Basis," at end of section.

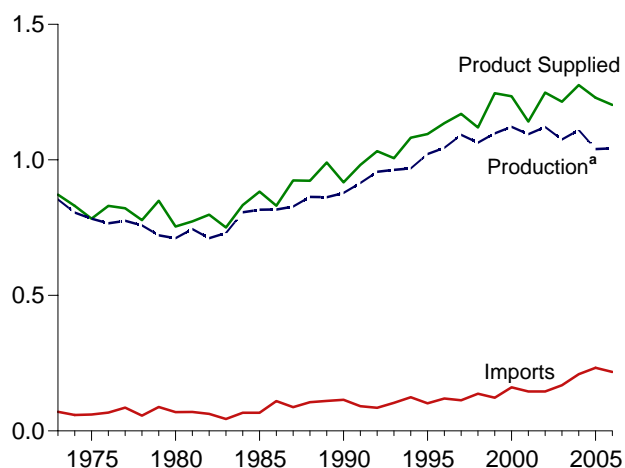
Note: Geographic coverage is the 50 States and the District of Columbia.
Web Page: For annual data not displayed between 1973 and 1995, see

<http://www.eia.doe.gov/emeu/mer/petro.html>.

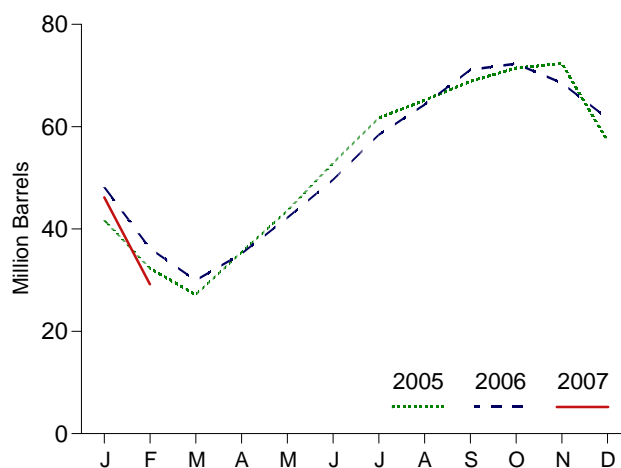
Sources: • **1973-1975:** Bureau of Mines, Mineral Industry Surveys, *Petroleum Statement, Annual*, annual reports. • **1976-1980:** Energy Information Administration (EIA), Energy Data Reports, *Petroleum Statement, Annual*, annual reports. • **1981-2005:** EIA, *Petroleum Supply Annual*, annual reports. • **2006:** EIA, *Petroleum Supply Monthly*, monthly reports.

Figure 3.7 Propane and Propylene
(Million Barrels per Day, Except as Noted)

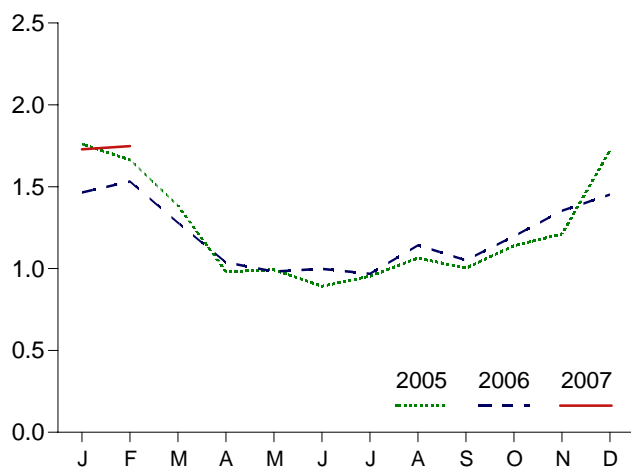
Overview, 1973-2006



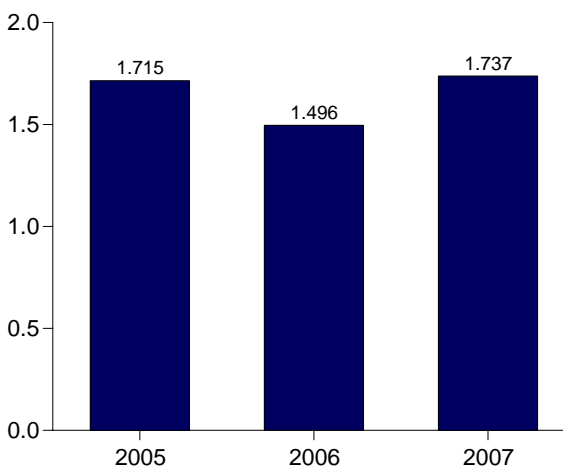
Stocks, End of Month



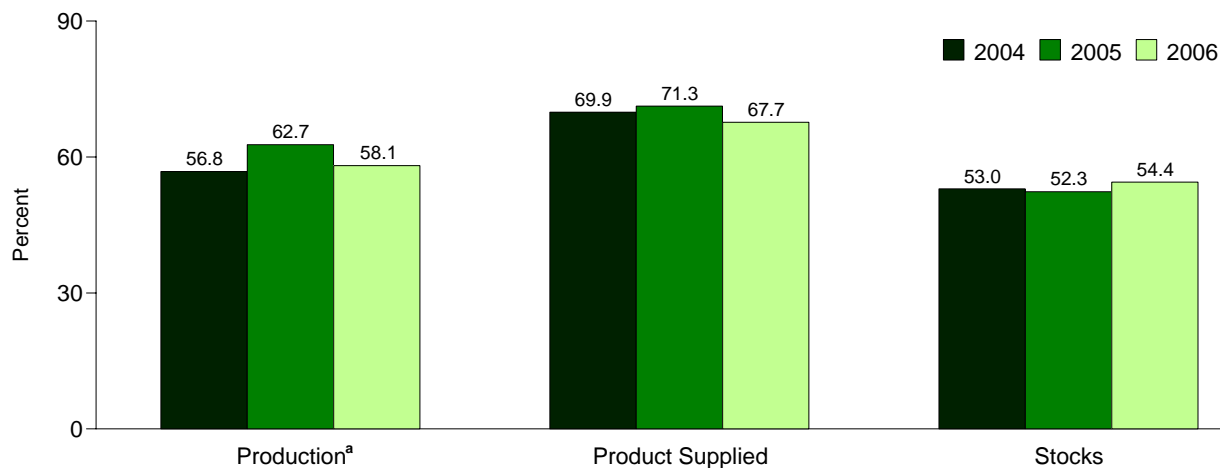
Product Supplied, Monthly



Product Supplied, January-February



Share of Liquefied Petroleum Gases, December



^aField production and refinery net production.

Note: Because vertical scales differ, graphs should not be compared.

Web Page: <http://www.eia.doe.gov/emeu/petro.html>.

Sources: Tables 3.8 and 3.9. Calculation of shares is based on data prior to rounding.

Table 3.9 Propane and Propylene Supply, Disposition, and Stocks (A Subset of Table 3.8)

	Supply			Disposition				Stocks ^{c,d}
	Field Production ^a	Refinery Net Production	Imports	Stock Change ^{b,c}	Refinery Inputs	Exports	Product Supplied	
								Million Barrels
1973 Average	583	271	71	30	8	15	872	65
1975 Average	550	234	60	36	11	13	783	82
1980 Average	442	269	69	4	12	10	754	^c 65
1985 Average	521	295	67	-50	3	48	883	39
1990 Average	474	404	115	48	(s)	28	917	49
1995 Average	519	503	102	-10	0	38	1,096	43
1996 Average	525	520	119	(s)	0	28	1,136	43
1997 Average	528	565	113	3	0	32	1,170	44
1998 Average	513	550	137	56	0	25	1,120	65
1999 Average	529	569	122	-59	0	33	1,246	43
2000 Average	539	583	161	-5	0	53	1,235	41
2001 Average	538	556	145	67	0	31	1,142	66
2002 Average	549	572	145	-36	0	55	1,248	53
2003 Average	506	570	168	-8	0	37	1,215	50
2004 Average	526	584	209	15	0	28	1,276	55
2005 January	527	560	274	-428	0	28	1,761	42
February	540	579	244	-336	0	35	1,664	32
March	540	549	164	-166	0	34	1,385	27
April	531	586	179	277	0	38	981	35
May	531	587	175	261	0	39	992	44
June	516	576	152	311	0	42	892	53
July	505	552	220	285	0	39	953	62
August	505	540	171	112	0	40	1,064	65
September	437	466	256	124	0	32	1,003	69
October	448	441	377	83	0	44	1,139	71
November	469	513	293	31	0	34	1,211	72
December	444	541	293	-488	0	44	1,722	57
Average	499	540	233	6	0	37	1,229	57
2006 January	490	527	200	-297	0	50	1,464	48
February	495	511	201	-427	0	103	1,531	36
March	495	479	169	-202	0	66	1,280	30
April	500	535	234	174	0	58	1,037	35
May	503	564	174	226	0	33	982	42
June	501	540	231	248	0	26	998	50
July	504	549	226	284	0	26	968	58
August	497	574	290	189	0	30	1,142	64
September	507	561	235	227	0	24	1,051	71
October	501	531	248	40	0	43	1,197	72
November	513	549	208	-126	0	43	1,353	69
December	^R 499	^R 581	^R 195	^R -224	0	^R 46	^R 1,452	^R 62
Average	^R 500	542	^R 218	^R 12	0	^R 45	^R 1,203	^R 62
2007 January	^{RF} 508	^{RF} 550	^E 232	^E -477	^E 0	^E 40	^E 1,728	^E 46
February	^F 509	^F 505	^E 169	^E -607	^E 0	^E 41	^E 1,748	^E 29
2-Month Average	^F 508	^F 529	^E 202	^E -539	^E 0	^E 40	^E 1,737	^E 29
2006 2-Month Average	493	519	201	-359	0	75	1,496	36
2005 2-Month Average	533	569	260	-385	0	32	1,715	32

^a Propane and propylene production at natural gas processing plants.

^b A negative number indicates a decrease in stocks and a positive number indicates an increase. The current month stock change estimate is based on the change from the previous month's stocks estimate, rather than the actual stocks value shown in this table.

^c See Note 4, "New Stock Basis," at end of section.

^d Stocks are at end of period.

R=Revised. E=Estimate. F=Forecast. (s)=Less than 500 barrels per day.

Note: Geographic coverage is the 50 States and the District of Columbia.

Web Page: For annual data not displayed between 1973 and 1995, see

<http://www.eia.doe.gov/emeu/mer/petro.html>.

Sources: • **1973-1975:** Bureau of Mines, Mineral Industry Surveys, *Petroleum Statement, Annual*, annual reports. • **1976-1980:** Energy Information Administration (EIA), Energy Data Reports, *Petroleum Statement, Annual*, annual reports. • **1981-2005:** EIA, *Petroleum Supply Annual*, annual reports. • **2006 and 2007:** EIA, *Petroleum Supply Monthly*, monthly reports; and, for the current two months, *Weekly Petroleum Status Report* data system, Short-Term Integrated Forecasting System, and *Monthly Energy Review* data system calculations.

Table 3.10 Other Petroleum Products Supply, Disposition, and Stocks

	Supply				Disposition				Stocks ^{d,f}
	Field Production ^a	Refinery and Blender Net Production	Imports	Adjust- ments ^b	Stock Change ^{c,d}	Refinery and Blender Net Inputs	Exports	Products Supplied ^e	
Thousand Barrels per Day									Million Barrels
1973 Average	513	2,301	290	19	1	750	162	2,211	179
1975 Average	416	2,097	144	35	^d -6	537	158	2,001	188
1980 Average	369	2,559	130	30	15	310	197	2,566	^d 205
1985 Average	296	2,183	550	53	22	886	227	1,947	206
1990 Average	309	2,452	705	80	-32	887	289	2,402	201
1995 Average	335	2,522	708	174	-23	958	348	2,457	206
1996 Average	336	2,541	879	230	-11	1,014	376	2,608	202
1997 Average	318	2,671	945	215	30	985	402	2,733	213
1998 Average	309	2,753	888	190	18	1,002	380	2,741	219
1999 Average	303	2,709	943	199	-64	1,061	338	2,819	196
2000 Average	306	2,705	938	143	30	991	429	2,642	207
2001 Average	307	2,651	1,095	95	20	1,013	434	2,681	214
2002 Average	300	2,712	1,085	126	-42	1,123	479	2,662	199
2003 Average	275	2,780	1,087	116	21	981	509	2,747	207
2004 Average	277	2,887	1,419	-37	58	1,049	499	2,940	228
2005 January	260	2,765	1,236	62	533	848	420	2,521	244
February	260	2,814	1,513	177	512	1,124	514	2,614	259
March	268	2,825	1,353	302	64	1,221	540	2,923	261
April	272	2,894	1,504	225	-108	1,791	514	2,698	257
May	286	2,873	1,821	96	28	1,474	475	3,099	258
June	295	2,988	1,855	120	-267	1,433	632	3,461	250
July	293	2,961	1,688	-70	-236	1,567	504	3,036	243
August	280	2,946	1,642	-31	-506	1,478	588	3,277	227
September	247	2,593	1,877	11	141	1,407	417	2,762	231
October	252	2,410	1,875	4	61	1,242	451	2,786	233
November	248	2,629	1,455	132	-8	1,128	450	2,894	233
December	235	2,690	1,484	-22	-132	1,327	529	2,663	229
Average	266	2,782	1,609	83	4	1,337	503	2,896	229
2006 January	244	2,704	1,761	175	522	1,115	552	2,695	245
February	244	2,685	1,627	213	387	1,258	620	2,504	256
March	245	2,676	1,535	7	235	1,185	508	2,535	263
April	260	2,731	1,872	-35	275	1,266	632	2,655	271
May	270	2,902	2,184	-263	40	1,516	624	2,912	272
June	275	2,944	1,879	263	-226	1,781	566	3,239	266
July	276	2,894	2,023	-156	15	1,605	608	2,809	266
August	271	2,994	2,136	72	55	1,664	627	3,126	268
September	278	3,029	1,926	-185	79	1,427	526	3,015	270
October	274	2,827	1,606	-78	-292	1,384	584	2,953	261
November	258	2,814	1,794	-197	-73	1,284	510	2,948	259
December	249	2,707	1,719	-206	216	1,142	505	2,605	266
Average	262	2,826	1,840	-35	101	1,386	572	2,834	266

^a Production at natural gas processing plants. Through 1988, includes pentanes plus and a small amount of finished petroleum products. Beginning in 1989, includes pentanes plus only.

^b An adjustment for motor gasoline blending components and fuel ethanol. Through 2004, includes what was previously classified as "Field Production" of motor gasoline blending components and other hydrocarbons and oxygenates.

^c A negative number indicates a decrease in stocks and a positive number indicates an increase.

^d See Note 4, "New Stock Basis," at end of section.

^e See Note 6, "Data Discrepancies," at end of section.

^f Stocks are at end of period.

Notes: • "Other Petroleum Products" include pentanes plus, other

hydrocarbons and oxygenates, unfinished oils, gasoline blending components, and all finished petroleum products except finished motor gasoline, distillate fuel oil, residual fuel oil, jet fuel, liquefied petroleum gases, and crude oil that is used as fuel; beginning in 2005 also includes naphtha-type jet fuel. • Geographic coverage is the 50 States and the District of Columbia.

Web Page: For annual data not displayed between 1973 and 1995, see <http://www.eia.doe.gov/emeu/mer/ferro.html>.

Sources: • **1973-1975:** Bureau of Mines, Mineral Industry Surveys, *Petroleum Statement, Annual*, annual reports. • **1976-1980:** Energy Information Administration (EIA), Energy Data Reports, *Petroleum Statement, Annual*, annual reports. • **1981-2005:** EIA, *Petroleum Supply Annual*, annual reports. • **2006:** EIA, *Petroleum Supply Monthly*, monthly reports.

Petroleum

Note 1. Survey Respondents: The Energy Information Administration (EIA) uses a number of sources and methods to maintain the survey respondent lists. On a regular basis, survey managers review such industry publications as the *Oil and Gas Journal* and *Oil Daily* for information on facilities or companies starting up or closing down operations. Those sources are augmented by articles in newspapers, letters from respondents indicating changes in status, and information received from survey systems.

To supplement routine frames maintenance and to provide more thorough coverage, a comprehensive frames investigation is conducted every 3 years. This investigation results in the reassessment and recompilation of the complete frame for each survey. The effort also includes the evaluation of the impact of potential frame changes on the historical time series of data from these respondents. The results of this frame study are usually implemented in January to provide a full year under the same frame.

In 1991, the EIA conducted a frame identifier survey of companies that produce, blend, store, or import oxygenates. A summary of the results from the identification survey was published in the *Weekly Petroleum Status Report* dated February 12, 1992, and in the February 1992 issue of the *Petroleum Supply Monthly*. In order to continue to provide relevant information about U.S. and regional gasoline supply, the EIA conducted a second frame identifier survey of those companies during 1992. As a result, numerous respondents were added to the monthly surveys effective in January 1993. See Explanatory Note 7 in the *Petroleum Supply Monthly*.

Note 2. Motor Gasoline: Beginning in January 1981, the EIA expanded its universe to include non-refinery blenders and separated blending components from finished motor gasoline as a reporting category. Also, survey forms were modified to describe refinery operations more accurately.

Beginning with the reporting of January 1993 data, the EIA made adjustments to the product supplied series for finished motor gasoline. It was recognized that motor gasoline statistics published by the EIA through 1992 were underreported because the reporting system was (1) not collecting all fuel ethanol blending, and (2) there was a misreporting of motor gasoline blending components that were blended into finished gasoline. The adjustments are incorporated into EIA's data beginning in January 1993. To facilitate data analysis across the 1992–1993 period, EIA has prepared a table of 1992 data adjusted according to the 1993 basis. See *Petroleum Supply Monthly*, March 1993, Table H3.

Note 3. Distillate and Residual Fuel Oils: The requirement to report crude oil in pipelines or burned on leases as either distillate or residual fuel oil has been eliminated. Prior to January 1981, the refinery input of unfinished oils typically exceeded the available supply of unfinished oils.

That discrepancy was assumed to be due to the redesignation of distillate and residual fuel oils received as such but used as unfinished oil inputs by the receiving refinery. The imbalance between supply and disposition of unfinished oils would then be subtracted from the production of distillate and residual fuel oils. Two-thirds of that difference was subtracted from distillate and one-third from residual. Beginning in January 1981, the EIA modified its survey forms to account for redesignated product and discontinued the above-mentioned adjustment.

Beginning in January 1993, distillate fuel oil end-of-month stocks are split into two sulfur categories to meet Environmental Protection Agency requirements effective October 1992. Beginning in January 2004, distillate fuel oil and residual fuel oil stocks are both split into three categories. For further details, see the EIA, *Petroleum Supply Monthly*.

Note 4. New Stock Basis: In January 1975, 1979, 1981, and 1983, numerous respondents were added to bulk terminal and pipeline surveys, affecting subsequent stocks reported and stock change calculations. Using the expanded coverage (new basis), the end-of-year stocks, in million barrels, would have been:

Crude Oil: 1982—645 (Total) and 351 (Other Primary).

Crude Oil and Petroleum Products: 1974—1,121; 1980—1,425; and 1982—1,461.

Motor Gasoline: 1974—225; 1980—263 (Total) and 214 (Finished); 1982—244 (Total) and 202 (Finished).

Distillate Fuel Oil: 1974—224; 1980—205; and 1982—186.

Residual Fuel Oil: 1974—75; 1980—91; and 1982—69.

Jet Fuel: 1974—30 (Total) and 24 (Kerosene Type); 1980—42 (Total) and 36 (Kerosene Type); and 1982—39 (Total) and 32 (Kerosene Type).

Liquefied Petroleum Gases: 1974—113; 1978—136; 1980—128; and 1982—102.

Propane and Propylene: 1978—86; 1980—69; and 1982—57.

Other Petroleum Products: 1974—190; 1980—207; and 1982—219.

Stock change calculations beginning in 1975, 1979, 1981, and 1983 were made by using new basis stock levels.

In January 1984, changes were made in the reporting of natural gas liquids. As a result, unfractionated stream, which was formerly included in the “Other Petroleum Products Supply and Disposition” table, is now reported on a component basis (ethane, propane, normal butane,

isobutane, and pentanes plus). Most of these stocks now appear in the "Liquefied Petroleum Gases Supply and Disposition" table. This change affects stocks reported and stock change calculations in each table. Under the new basis, end-of-year 1983 stocks, in million barrels, would have been: 108 for liquefied petroleum gases, 55 for propane and propylene, and 210 for other petroleum products.

In January 1993, changes were made in the monthly surveys to begin collecting bulk terminal and pipeline stocks of oxygenates. This change affected stocks reported and stock change calculations. However, a new basis stock level was not calculated for 1992 end-of-year stocks.

Note 5. Stocks of Alaskan Crude Oil: Stocks of Alaskan Crude oil in transit were included for the first time in January 1981. The major impact of this change is on the reporting of stock change calculations. Using the expanded coverage (new basis), 1980 end-of-year stocks, in million barrels, would have been 488 (Total) and 380 (Other Primary).

Note 6. Data Discrepancies: Due to differences internal to EIA data processing systems, some small discrepancies exist between data in the *Monthly Energy Review (MER)* and the *Petroleum Supply Annual (PSA)* and *Petroleum Supply Monthly (PSM)*. The data that have discrepancies are footnoted in Section 3 tables and summarized here.

Table	Data Series	Year Average	MER Data	PSA and PSM Data
3.1a	Natural Gas Plant Liquids Production	1976	1,604	1,603
3.1b	Exports, Total	1979	471	472
3.1b	Exports, Petroleum Products	1979	236	237
3.2a	Imports, SPR	1978	161	162
3.5	Stock Change	1974	10	9
3.5	Stock Change	1975	-41	-40
3.10	Products Supplied	1982	1,857	1,856